



PRIVATE UNIVERSITY PRODUCTS AND NEWS

JUNE 2021
PUPNMAG.COM

ECOLOGY, ART & ENVIRONMENT

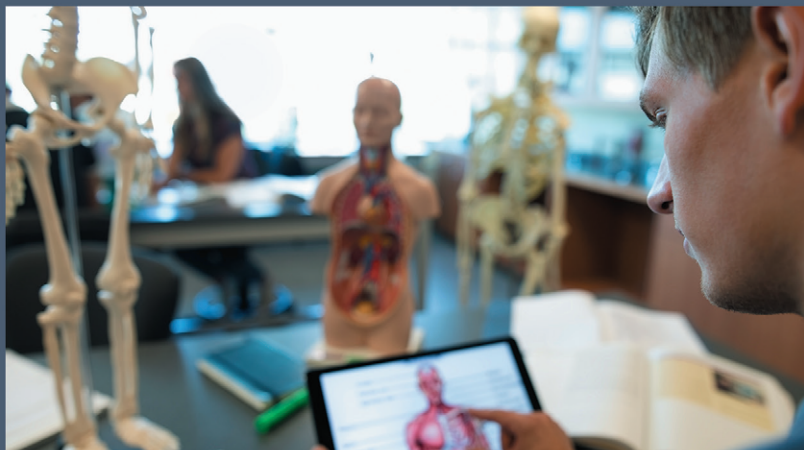
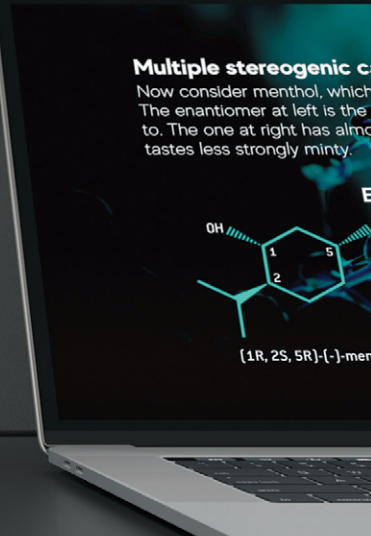
AT SAINT MICHAEL'S COLLEGE

SHOWCASE OF EXCELLENCE 2021

MANSUETO LIBRARY LIGHTS UP ANCIENT FIGURES

WELLNESS AND ATHLETIC EXCELLENCE AT CENTRE COLLEGE

Grants Available



Solutions for Remote, Hybrid, and In-Person Learning

We Can Help Ensure You're Ready - Both Now and in the Future

Extron has the technology that helps educators deal with teaching challenges, both immediate and long term. There has never been a better time to acquire or upgrade the AV teaching tools you need to reach students wherever they are. Congress is making it possible for schools to purchase these tools through the CARES Act ESSER Fund and the American Rescue Plan Act. In addition, Extron offers grants that let you start using these tools quickly at no cost while you apply for federal grants.

AV Products that Help Educators Teach Under all Circumstances

- Recording and Streaming solutions for remote and hybrid learning - Our SMP Streaming Media Processors connect students to live or on-demand lesson content anytime, anywhere, on any device.
- Voice reinforcement for in-person teaching, with or without a mask - Our Voicelift® Pro microphone system offers an economical amplification solution that preserves vocal health while distributing the instructor's voice to students in the classroom and attending remotely.
- Wireless connectivity for no-touch in-person collaboration - Our Sharelink® Pro wired and wireless presentation systems enable anyone in the room to present content on the classroom AV display from BYOD devices.

Extron

800.633.9876 • [extron.com/hybridlearning](https://www.extron.com/hybridlearning)

ROYAL[®]

BASKET TRUCKS

www.royal-basket.com

800.426.6447



**You Deserve the Cart
that Works for You!**



ADD DAYLIGHT & **CONTROL** GLARE

WITH TRANSLUCENT PANEL DAYLIGHTING SYSTEMS

Lightweight / Easy-to-install / Light Diffusing / Insulation Options / Adapter
Panels for Existing Framing / Pre-assembled Options / Custom Finish Colors

ACCESS TO NATURAL LIGHT
BENEFITS STUDENTS, STAFF
AND THE BOTTOM LINE!



SKYLIGHTS/CANOPIES/WALL SYSTEMS
MAJORSKYLIGHTS.COM

888-759-2678

CREATING ENVIRONMENTS WHERE PEOPLE CAN SHINE.™

FEATURES

14

INVESTING IN WELLNESS & ATHLETIC EXCELLENCE AT CENTRE COLLEGE

The largest, most comprehensive construction project to date at Centre College will create a 135,000-square-foot facility devoted to wellness and athletic excellence. It will benefit the entire campus community and set a new standard for holistic education at top-ranked residential liberal arts colleges across the nation.

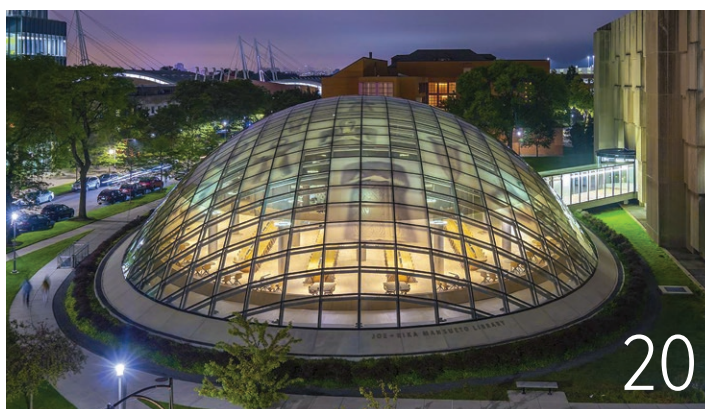


14

20

MANSUETO LIBRARY LIGHTS UP ANCIENT FIGURES

Artist Ann Hamilton's evocative images make "the ancient past tangible." During a visit to the University of Chicago, visual artist Ann Hamilton became enamored with the Oriental Institute's collection of stone and ceramic figures—ancient but timeless, inanimate but strangely alive.



20

26

JUDSON COLLEGE LOSES ITS STRUGGLE TO SURVIVE

In a rural Alabama town of just over 10,500 residents sits the nation's fifth oldest college for women. The Judson Female Institute was one of the first colleges for women in the South, founded in 1838 with the first classes conducted in a house and a student body of nine. Members of the Siloam Baptist Church believed "that educating women would not only improve the lives of their students, but would also strengthen families, communities, churches, and society as a whole."



26

32

SHOWCASE OF EXCELLENCE 2021

Our readers requested from us a special annual feature to highlight providers that provide quality products and services for private colleges and universities. This "Showcase of Excellence" appears each year in our June issue. This special section is filled with full and half page ads, offering both case studies and product showcases for service and product providers exclusive to the higher education market.



32

COLUMNS



Cover courtesy Saint Michael's College

SPOTLIGHT / ON OUR COVER

08

ECOLOGY, ART, AND ENVIRONMENT AT SAINT MICHAEL'S COLLEGE

Brian Collier, Associate Professor of Fine Arts in Art & Design, as well as Curator and Director of the McCarthy Art Gallery at Saint Michael's College, devotes himself to a dizzying and inspiring array of impressive personal and professional projects (many of which are viewable at briandcollier.net). All of Collier's work centers on issues of ecology and the environment, along with close examination of human interventions that either suppress or support the natural world.

**CAMPUS UPDATES****66**

EDITOR'S LETTER

It is hard to believe that June is here and half of 2021 is behind us! I feel as if we just took down the Christmas tree, but before we know it, everyone will be welcoming the students, faculty, and staff to the 2021-2022 term. The good news is that, as I write this letter, 50% of all adults in the country have been vaccinated, and we continue the path to getting back to normal. I know I am not alone in looking forward to enjoying great summer cookouts with friends once again.

The good news continues, with many of our readers reporting a record number of applications for the coming year. These numbers not only remind us of the importance of these tabernacles of education to our leaders of tomorrow, but also make us realize that the campus experience is more valuable to all of us, now more than ever. We continue to hear from private colleges and universities across the nation about facility upgrades and campus expansions as everyone continues to support their unique missions by providing beautiful learning environments. This summer, many prospective students will tour your campuses and feel the awe and excitement of starting their journey of learning and growth.

Like many readers, I have thought a lot lately about what I missed the most over the past year and what I would be most thankful for when we got back to “normal,” and my answer may be surprising. What I will be most happy to get back to is not football games—even though I missed them deeply—not eating in a restaurant—though my cooking has gotten repetitive and predictable—and not the delight of traveling to a getaway location to enjoy a beautiful part of our country. No, what I most look forward to is the simple joy of getting to see faces of the people we walk by each day, sharing a smile and nod, and seeing the joy on a child's face, perhaps as they take that first lick of an ice cream cone.

I am thankful that we are getting to experience these simple joys again and getting to experience a whole array of blissful summer fun. I hope that each of you enjoy the beginning of summer, and I suggest you go for the dipped cone—it is the best.

Thank you again for the privilege of getting to share with you.

Ed Bauer
Publisher, PUPN MAG
Private University Products and News Magazine
info@pupnmag.com



Ed Bauer
Publisher
ed@pupnmag.com

Rachel James Clevenger, PhD
Editor-in-Chief
rachel@pupnmag.com

Lawrence Provenzano
Director of Client Development

Hilary Moreno
Creative Director

Lisa Gibbs, EdD
Cynthia Mwenja, PhD
Staff Writers

Lisa Gibbs
Michael Stryick
Jack Wang
Contributing Writers

Cassidy Clevenger
Circulation
circulation@pupnmag.com



PUBLISHED BY FLAHERTY MEDIA
PO Box 1903, Pelham, AL 35124
Toll Free: 800-705-5280
Fax: 855-239-8093

No part of this publication may be reproduced or transmitted in any form or by any means, electronic or mechanical, including photocopy, recording, or any information storage-and-retrieval system without permission in writing from the publisher. The views expressed by those not on the staff of PUPN magazine, or who are not specifically employed by Flaherty Media, LLC, are purely their own. Comments and submissions are welcome, and can be sent to rachel@pupnmag.com.

REFINED CONCRETE & TERRAZZO FLOOR CARE PROGRAM

**NEVER Deep Strip, Scrub, Seal, Apply Floor
Finish Or Diamond Grind Your Floors Again!**

Program Benefits

- Onsite facility assessment to determine what level of restorative maintenance, if any is needed
- 3 simplified levels of restorative maintenance
- No specialized equipment needed (ie; floor grinders or slurry vacuums)
- Training videos on each level of restorative maintenance
- Simple procedure guidelines
- Cost calculators to help determine square footage costs



BY

CHARLOTTE™
PRODUCTS LTD.

LEADERS IN SURFACE CLEANING

www.charlotteproducts.com

1.877.745.2880

info@charlotteproducts.com



Brian Collier, Associate Professor of Fine Arts in Art and Design, as well as Curator and Director of the McCarthy Art Gallery at Saint Michael's College, devotes himself to a dizzying and inspiring array of impressive personal and professional projects (many of which are viewable at briand-collier.net). All of Collier's work centers on issues of ecology and the environment, along with close examination of human interventions that either suppress or support the natural world.

PROFESSOR SPOTLIGHT

by Cynthia Mwenja, PhD

Ecology, Art, and Environment at Saint Michael's College

Collier's primary current project is Unlawning America (unlawningamerica.societyrnc.net), which focuses on educating others on the value of not mowing. He hopes to get people to think deeply about their reasons for mowing spaces that are not needed for sports or play. While people in the United States often keep mown areas simply because of cultural aesthetics and social conditioning, Collier reports, lawns do a great deal of ecological damage and are detrimental to animals, insects, and wild plants.

As Collier has spread the adage of "If you don't use it, don't mow it!" throughout the community, Saint Michael's College has become more receptive to the idea and has set aside a couple of "no-mow" meadows on campus. Collier encourages people to go even further if possible by planting native plants to support local wildlife. An additional step can be taken by planting a garden. As Collier points out, this action can be a particularly important part of solving global food supply issues; establishing small-scale, organic agriculture areas all around the places that people live and work could supply much of the food needed on the planet.

Collier has become involved with the "no-mow" movement because, as he says, "we

haven't yet seen a shift where it's more normal to unawn than to mow," and he would like to help facilitate this paradigm change. The goal, however, is not to take away space people use; it's to get people to reconsider maintaining lawns that aren't used for other purposes. Unlawning saves time and money and sharply reduces pesticide use. What's required is a shift in people's thinking—a cultural shift. Such shifts, as Collier points out, happen all the time, and artists are often crucial to the process. Collier spreads the unlawning message through community presentations, and he encourages people to do what they can to unawn in small and big ways.

The Collier Classification System for Very Small Objects

Another of Collier's ongoing projects, The Collier Classification System for Very Small Objects—launched in 2004—was designed so that people could think about closely investigating and noticing small items. The collection responds to the ways that the natural world is defined and represented in natural history settings, and it challenges existing taxonomic systems. Collier calls the collection an "archive

of the wonder of little stuff." Collier did define a new taxonomy for this project which can be used by anyone to assign new names to things they find.

The collection, viewable online at www.verysmallobjects.com, has also been presented as a traveling museum. For an exhibition at the University of Vermont's Fleming Museum, Collier—who is also an accomplished fine furniture maker—created cherry wood cabinets with glass fronts, reminiscent of old library cases, to house and exhibit the collection.

Initiatives at St. Michael's

Collier's converging interests in art and ecology have found a wonderful outlet for expression in Saint Michael's 340-acre natural area. Declan McCabe, Professor of Biology and Natural Area Coordinator at Saint Michael's, discusses the variety of opportunities for truly integrative liberal arts projects. McCabe wholeheartedly supports—and is delighted by—the majority of Collier's ideas for art projects in the natural area. Students in Collier's classes create ecological art that is designed to compost so it doesn't need removal. For example, the signs they create are made from local plants. In one project, McCabe



"UNLAWNING AMERICA: A CALL TO INACTION" EXHIBITION IMAGE AT BURLINGTON CITY ARTS, BURLINGTON, VT
(ARCHIVAL PIGMENT PRINTS, BOTANICAL SPECIMENS, WOOD PLANTER, SINGLE CHANNEL VIDEO) 2017.

reports that the students gathered milkweed seeds, then created a video of scattering them. In another project, students filled their footprints with compost and wildflower seeds. McCabe did have to re-direct Collier's idea of placing bat houses in the natural area since the type of bat that would be drawn to them would compete with the bats in the woods; the bat houses were installed on campus instead.

Collier has worked with the Saint Michael's Center for the Environment to set up a pollinator garden between the student center and dining hall, along with other "pollinator pods" with student-designed informational signage. The goal is to present this type of space, along with the "no-mow" meadows, as models of positive ecological function that are good and normal.

Work as a Professor

Collier brings his expansive energy and creativity to his courses, as well. Heather Ferrell, Curator and Exhibitions Director at Burlington City Arts (BCA)—where Collier serves on the advisory committee—admires how Collier teaches students to integrate art and sustainability. Ferrell also loves to bounce around ideas for shows and artists with Collier, and

Brian Collier's primary current project is Unlawning America, which focuses on educating others on the value of not mowing. He hopes to get people to think deeply about their reasons for mowing spaces that are not needed for sports or play. While people in the United States often keep mown areas simply because of cultural aesthetics and social conditioning, Collier reports, lawns do a great deal of ecological damage and are detrimental to animals, insects, and wild plants.

she appreciates the ways he is "always thinking about how to bring in other viewpoints" to the McCarthy Art Gallery. Nathaniel Lew, Chair of Fine Arts and Professor of Music, says that Collier does excellent work as Curator and Director of the McCarthy Art Gallery, which is housed in the performing arts building. Lew admires Collier's strengths as a teacher and colleague—strengths such as his spirit of collaboration, his creativity, and his "quirky activist spirit." Lew particularly looks forward to one annual project that students in Collier's sculpture class complete: inflatables made from

garbage bags, plastic sheeting, and tape. Lew points out that this project forces students to think in an entirely different way about design. The fragile constructions and the fans that inflate them are carefully set up in a central area for viewing by the campus community—for one day. Lew says it's a "highlight" of the year, and he makes sure to rush over between classes to enjoy the show.

Collier's student and advisee, Celeste Matte—who will graduate in 2022 with degrees in Elementary Education as well as Art and Design—really appreciated Collier's innovative



approach to teaching sculpture remotely when the class had to go online during the pandemic. To replace the second big project planned for the second half of the course, Collier assigned one small sculpture a day for thirty days, each focusing on a sculptural term such as "texture," "additive," "subtractive," etc. The students worked with supplies they had at home, such as pieces from board games or clothes, so they all worked with different media, then submitted pictures of the completed sculptures for group critique. Matte says that this activity is a great example of the sort of freedom Collier provides to his students as they develop their work. As a future educator, she appreciates Collier's pedagogical model which affords students both support and autonomy, driven by his desire for each student to succeed to the best of their ability.

Sense of Humor

Collier's sense of humor shows up throughout his work and activism. Will Mentor, Associate Professor of Fine Arts at Saint Michael's tells the story of a time Collier was in graduate school and noticed a groundhog at a construction site. Collier ringed the hole with official fencing and signs, and no one disturbed the area until late in the project. This story shows Collier's interests in interactions with the environment at the edge of human-dominated spaces, along with his playfulness

ATTRACTIVE TO HUMANS. REPULSIVE TO MICROBES.

BioFit ArmorSeat™ Chairs

- antimicrobial with UV inhibitors
- withstand frequent cleaning and disinfecting
- fully ergonomic and lab-ready



© 2021
BioFit Engineered Products



one place. every space.



Everything education needs — and more

More design in a stacker. More comfort in a sit. More models to match the needs of any (and every) space for learning. The robust build of Orbix® features an ultra-supportive, extra-wide backrest for unmatched breathability and the comfort to breeze through a day on campus. See more of this smart, new collection today.

SitOnIt • Seating®

www.sitonit.net/orbix



"TEACH THE STARLINGS"
EXHIBITION IMAGE AT ARTSITES,
RIVERHEAD, NY (AUDIO-RIGGED
NESTBOX, AUDIO RIGGED SUET
FEEDING STATION, FIBERGLASS
STARLING SCULPTURES,
PLASTIC MEGAPHONES) 2010.

in exploring those interactions. Another wonderful example of both Collier's work and sense of humor is his "Teach the Starlings" project (teachstarlings.societyrne.net). In this, one of many bird-related projects he has developed, Collier teaches the history of how European starlings were introduced in North America. He then encourages people to teach starlings—who have strong, innate mimicry abilities—to say "Schieffelin," which is the name of the man who introduced them in North America.

"Don't be just one thing"

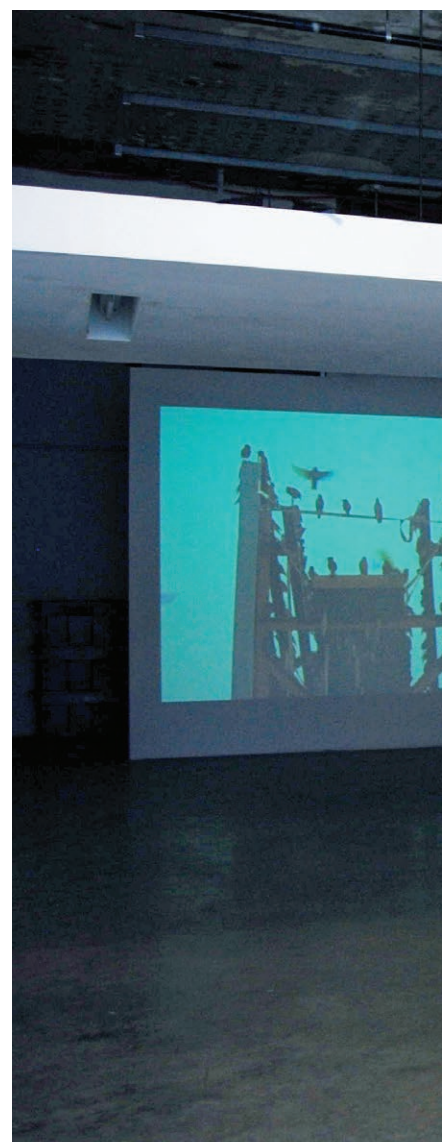
In his many projects, Collier strives to meld visual strengths, writing skills, and an "awareness of environmental stuff"; his guiding principle is "Don't be just one thing." Collier's colleagues and students are impressed with this range of talents. As Will Mentor, Associate Professor of Fine Arts at Saint Michael's says, "Brian can build a beautiful piece of furniture and teach digital tools. It's incredible—few people have that range of skills." Mentor goes on to say that Collier "could teach any class" in the art department "and do it well."

Mentor points out the ways that Collier's teaching, research, and activism are completely intertwined and seamless, saying that it's a "real pleasure" to work with someone who is so deeply committed to all of the aspects of his work. Ferrell points out Collier's many strengths, calling attention to his talent as an artist, his ability to engage students as a professor, and his well-roundedness, saying that she continually learns from him. McCabe, pointing out that Collier recently completed the Vermont Master Naturalist program, appreciates that Collier continues to learn and develop skills outside of his discipline, where he has already accomplished so much. Lew notes the importance of Collier's work, saying "For him, art is art and also engagement."

As Collier puts it, "I just want to change things—that's my motivation."



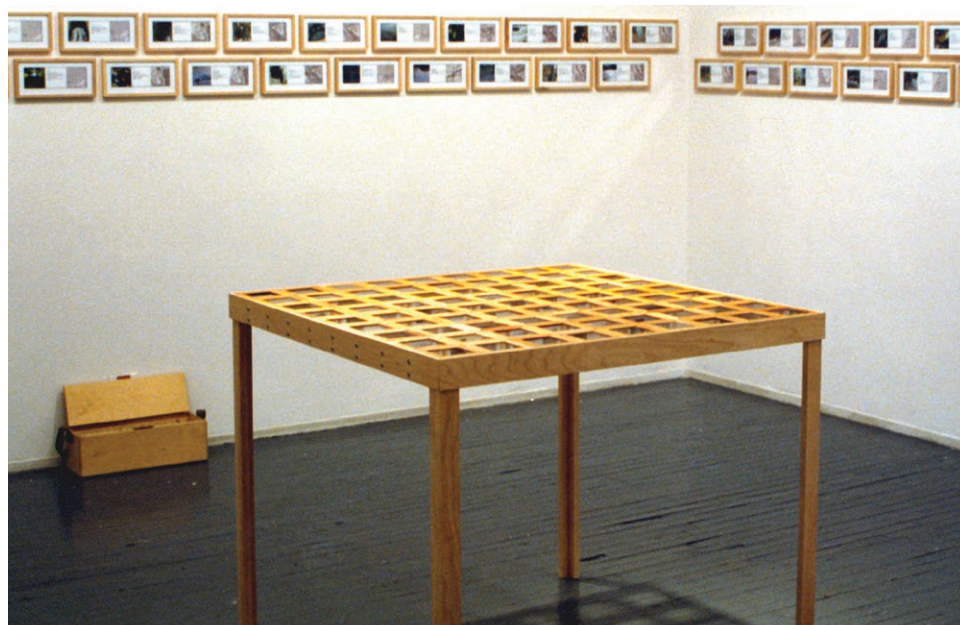
ABOUT THE AUTHOR: Dr. Cynthia Mwenja teaches Composition and Rhetoric at the University of Montevallo.



▲ **"TEACH THE STARLING IN KANSAS CITY"** EXHIBITION IMAGE AT PARAGRAPH GALLERY, KANSAS CITY, MO (WALL MURAL, ARCHIVAL PIGMENT PRINTS, SINGLE CHANNEL VIDEO, PRESERVED STARLING SPECIMEN, FIBERGLASS STARLING SCULPTURES) 2008.

► **"SOME PROPERTIES OF WATER, PHASE 2: EVAPORATION"** EXHIBITION IMAGE AT ARTEMISIA GALLERY, CHICAGO, IL (WOOD, GLASS BOTTOM EVAPORATION TRAYS, ARCHIVAL PIGMENT PRINTS, WOOD COLLECTION BOX) 2003.

►► **"NATURE STUDY NO. 10"** (WAX PRESERVED NATURAL SPECIMEN, WOOD, INK AND WATERCOLOR DRAWING) 1998.



INVESTING IN WELLNESS AND ATHLETIC EXCELLENCE AT CENTRE COLLEGE

by Michael Strynick

The largest, most comprehensive construction project to date at Centre College will create a 135,000-square-foot facility devoted to wellness and athletic excellence. It will benefit the entire campus community and set a new standard for holistic education at top-ranked residential liberal arts colleges across the nation.







PHOTO COURTESY CENTRE COLLEGE AND MSA SPORTS

Enhancing Student Success

Designed in partnership with Cincinnati-based architects MSA Sport, the \$50 million project reflects Centre's commitment to invest in facilities and programs that enhance student success, hone leadership skills and prepare graduates for lives of impact.

"This new facility will allow us to continue attracting talented students from around the nation and across the globe not only to work with our world-class faculty but also to participate in a premier athletic and wellness program with dedicated coaches and staff who teach important leadership skills such as teamwork, resilience and determination," said Centre President Milton Moreland.

"In the process," he emphasized, "Centre will extend into the next century its 200-year-plus history of producing great leaders."

A campus-wide strategic planning effort made clear the need for expanding wellness and athletic facilities in order to continue the long history and clear mission of training leaders

who can make a difference in the world. "This significant investment exemplifies Centre's continuing commitment to excellence," Moreland said. "It will strengthen our earned reputation as one of the nation's foremost colleges focused on leadership development and career readiness."

He added, "The Initiative for Wellness and Athletic Excellence represents a transformational moment for Centre College and will have a profound impact on our ability to offer a deeply holistic academic experience, elevating our mission to develop mind, body and spirit."

An aggressive fundraising campaign to support this new initiative is already in progress. Early commitments, including two lead gifts, exceed three-quarters of the projected cost, leaving approximately \$12 million to raise to fully fund the project. This substantial investment reflects the desire of the lead donors to challenge the Centre community, known for its pride and generosity, to share this vision and take the mantle of propelling their future giving to an even higher potential.

The expansive new building will continue a series of recent campus construction projects totaling more than \$30 million and is an important next step in the strategic plan to equip the College to better serve its mission and the needs of families and students for the next fifty years.

"Centre is accelerating out of the global pandemic by investing in spaces that will enhance the student experience, grow enrollment, and provide increased health and wellness opportunities for the entire campus community," said Mark Nunnally, chair of the Centre College Board of Trustees.

Included in the overall construction project, Farris Stadium, built in 1923, will be transformed to provide world-class facilities for football, men's lacrosse, and track and field, and also provide new seating, hospitality spaces and an upgraded press box. In addition, Gary Wright Field will be relocated to create a new and enhanced experience for Centre's baseball team.

Beyond the wellness and athletic excellence project, the Centre College Board of Trustees



POWER IN SIMPLICITY

switch back M8RX™

DANTE
INTERFACE

STUDIO-QUALITY
MIC PREAMPS

HIGH-POWER
HEADPHONE AMP

LOW-DISTORTION
MONITOR MIXER

From symphonies to soloists, Switch Back M8RX allows artists to perform live, record, and monitor their mix all in one single tool.

www.HearTechnologies.com

Educational pricing available | (256) 922-1200 | sales@HearTechnologies.com

“Centre is accelerating out of the global pandemic by investing in spaces that will enhance the student experience, grow enrollment and provide increased health and wellness opportunities for the entire campus community.”

—Mark Nunnelly, chair of the Centre College Board of Trustees.

also approved additional funding to repurpose what will eventually be the College’s natatorium, upgrade the softball field, completely renovate three residence halls in the Old Quad and build a new greenhouse.

Life Trustee J. David Grissom is particularly excited about the leadership opportunities these projects will provide.

“I am proud to be affiliated with an institution that is prioritizing health and wellness opportunities and investing in facilities that prepare our students to be leaders in the classroom, on the field and in their communities,” he said.

“By building on more than 200 years of academic and athletic excellence,” Grissom

added, “this new facility will increase Centre’s commitment to health and wellness for its students, faculty and staff, as well as enhance the drive for competitive excellence for Centre’s outstanding scholar-athletes.”

Key components of the initiative for wellness and athletic excellence building design include:

- A 10-lane, 50-meter pool with a moveable bulkhead, an integrated diving well with 1-meter and 3-meter diving boards, and seating for 700
- A six-lane, 200-meter indoor track and turf infield with event seating for 800; this area

can easily be increased exponentially by using the turf infield and will double as a large space for campus events, such as the annual Commencement ceremony, concerts and debates

- A 6,000-square-foot strength and wellness center
- A nutrition center that includes an educational component
- Hospitality and engagement areas
- Locker rooms and multipurpose event spaces for activities such as yoga
- An enhanced Athletics Hall of Fame

While benefitting all 24 varsity teams, the aquatic and the track and field components of the new facility will offer the opportunity to strategically expand rosters by as many as seventy student-athletes. All of these efforts have a clear goal in mind.

“Along with other recent projects to enhance and expand academic facilities, create a new student success center, and add and renovate

YOU SHOULD HAVE USED STERIFAB

STERI-FAB®
MUCH MORE THAN A DISINFECTANT
800 359-4913 • STERIFAB.COM

FINE ACADEMIC FURNITURE
Dedicated to design and function. Built on Maine integrity.

Huston & Company
FINE CUSTOM FURNITURE
LITHGOW LIBRARY
AUGUSTA, MAINE
226 LOG CABIN ROAD, KENNEBUNKPORT, MAINE 04046
888-869-6370 • HUSTONANDCOMPANY.COM

residence halls,” said Moreland, “this project makes clear Centre’s mission to offer an impactful campus experience that prepares its graduates to move the world forward in ways driven by purpose and meaning.”

A groundbreaking for the project is being planned for October, with completion anticipated within 18 months. The relocation of Gary Wright Field for baseball is projected to be completed sooner.

 **ABOUT THE AUTHOR:** Michael Stryck is Centre College’s chief communications officer. Stryck earned his Ph.D. in comparative literature at Binghamton University, SUNY, and completed an NEH Summer Seminar at Yale University. He taught at Georgia Tech, in the Kent State and University of Wisconsin systems, Davidson College, and Wake Forest University. Prior to his appointment at Centre, Stryck worked as a Strategic Partner with Patton McDowell & Associates, a Charlotte-based consultancy that provides philanthropic counsel and organizational strategy.



PHOTO COURTESY CENTRE COLLEGE AND MSA SPORTS

Award-Winning Solutions from Billy Goat®



- Aerators
- Sod Cutters
- Power Rakes
- Overseeders
- Brush Mowers
- Wheeled & Stand-On Blowers
- Outdoor Vacuums
- Debris Loaders

Call 800-776-7690 or visit billygoat.com



KENYON CERAMIC GLASS COOKTOPS

Since 1931

SMART BUILT-IN SAFETY FOR THE USER AND FACILITY



CHILD SAFETY LOCK-OUT WITH AUTO SHUT-OFF



HEAT LIMITING COOKING SURFACE PROTECTORS

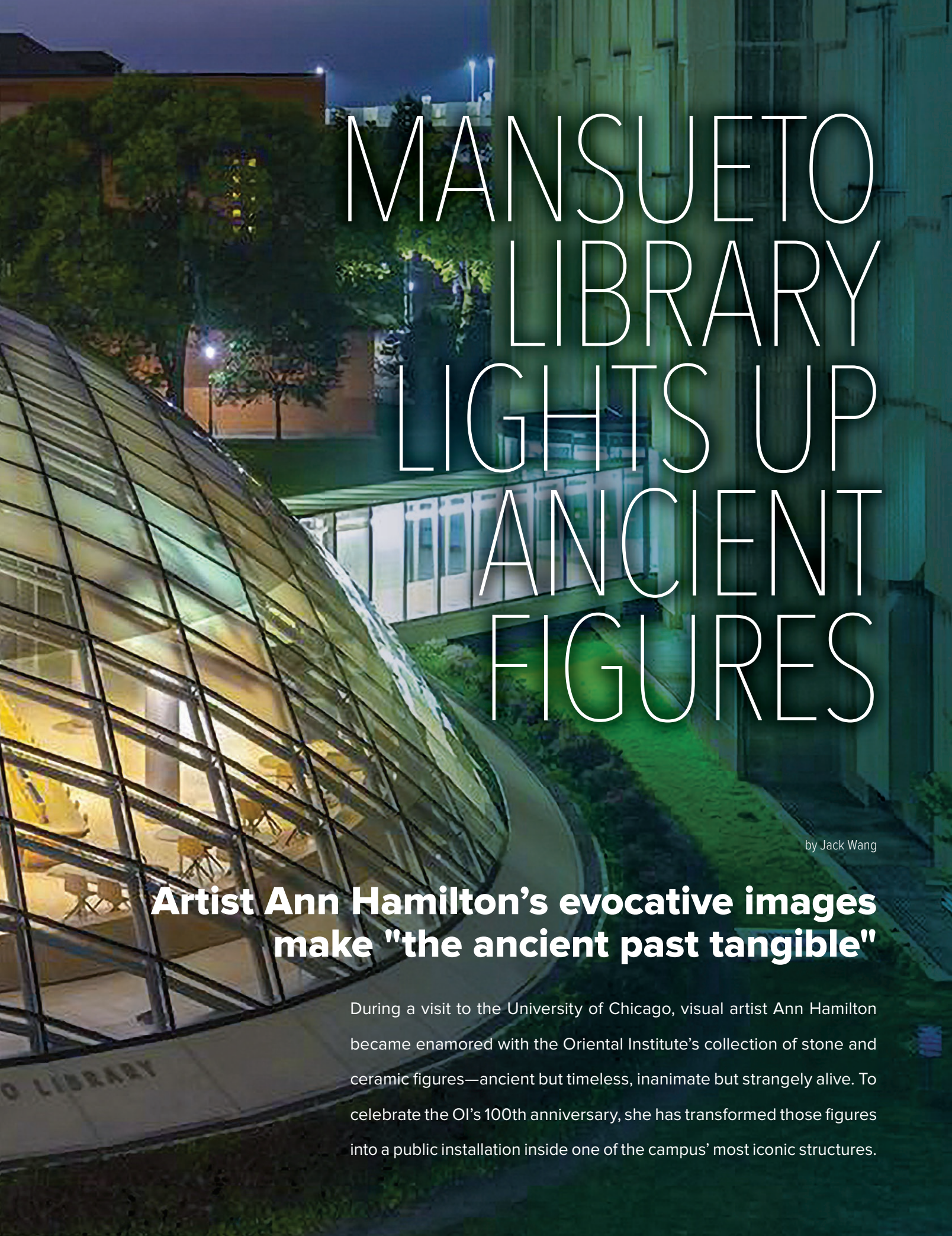


MEETS ADA REQUIREMENTS INCLUDING CA & TX

CONTACT US FOR SPECIAL PRICING:
WWW.COOKWITHKENYON.COM | 860.664.4906



JOE + RIKI MANSUET



MANSUETO LIBRARY LIGHTS UP ANCIENT FIGURES

by Jack Wang

Artist Ann Hamilton's evocative images make "the ancient past tangible"

During a visit to the University of Chicago, visual artist Ann Hamilton became enamored with the Oriental Institute's collection of stone and ceramic figures—ancient but timeless, inanimate but strangely alive. To celebrate the OI's 100th anniversary, she has transformed those figures into a public installation inside one of the campus' most iconic structures.

In the fall of 2018, Hamilton spent a week in residency working with the OI Museum's curators, conservators and registrars to make images of ancient Egyptian and Mesopotamian artifacts using early-generation scanners. The images, enlarged to gigantic scale, are now affixed to the elliptical glass dome of the Joe and Rika Mansueto Library Grand Reading Room, creating Hamilton's new installation titled *aeon*.

Printed on 160 sheets of semi-transparent film, each 2 x 2 meters, the twenty images Hamilton created are not intended to duplicate what might appear in a museum display case. She sought to reveal ineffable qualities of these objects through the use of scanners, in a unique hybrid of gestural drawing and lensless photography.

The unsettling liveliness of the images echoes a fundamental quality imparted to the figures by their makers millennia ago. The Egyptian Ushabti were placed in tombs in large numbers, journeying with the entombed person to the world beyond, ready to spring to life as servants. The Mesopotamian figures were deemed so

much alive that they were given food and drink, since the care given to these effigies had direct consequences for people in the underworld.

Mansueto Reading Room Dome

"Ann's images have an equal partner in the magnificent Mansueto dome," said Laura Steward, the UChicago Curator of Public Art, who invited Hamilton to make the project. The dome provides both awesome scale—some images are 12 meters tall—and dazzling illumination. After several thousand years entombed underground, and nearly a century enclosed in the OI's display cases, these temple figures derive majesty and power from their location in the Mansueto.

"Across centuries, we stand in front of these figures, with a felt sense of recognition," said Hamilton, who is known internationally for her large-scale multimedia installations, public projects and performance collaborations. "The liveness of the object draws us toward it, makes a connection, sparks curiosity."

When conceptualizing *aeon*, Hamilton felt drawn to the "temple-like feel" of Mansueto

Library—designed by architect Helmut Jahn and opened in 2011—as well as the chance to juxtapose ancient figures with one of UChicago's most futuristic buildings. She sought to explore the nature of reading rooms as places of gathering—the paradox of being present in a space, but escaping from it.

"When you read, you are in two places—the reading room and the faraway world of the book," said Hamilton. "That particular quality of simultaneous attentions is central to *aeon*." Hamilton worked with a small flatbed desktop scanner and a handheld wand scanner, both designed with a shallow depth of field and intended for documents, not three-dimensional objects.

The movement of the scan head, whether driven mechanically or by hand, differentiates scanners from traditional cameras. The resulting images record the movement of the scanner's light across the figure over time. Strangely, this sense of movement accrues not to the photographic process, but to the figures themselves. That, and the shallow depth of field, make them seem to actively emerge from a misty background.



ULINE
SHIPPING SUPPLY SPECIALISTS
FACILITY FUNDAMENTALS

ORDER BY 6 PM FOR
SAME DAY SHIPPING

COMPLETE CATALOG 1-800-295-5510 uline.com

NIGHTLOCK[®] LOCKDOWN

SECURE CLASSROOM IN SECONDS



SIMPLE • FAST • SECURE FOR EXTREME EMERGENCY SITUATIONS

The Nightlock Lockdown Door Barricade allows a teacher to immediately lock the door from inside the classroom, eliminating exposure during a hostile intruder situation. This device makes it virtually impossible for an intruder to break through an entry door.

- Simply add this safety device to classroom doors
- Works with outward and inward swing doors
- No need to replace existing hardware
- One time solution - easy to install
- Lockdown in seconds

So affordable!
\$59⁹⁵
ea.

NIGHTLOCK

classroomlockdown.com

CALL TOLL FREE 1-855-644-4856





PHOTO BY TOM ROSSITER



JOE AND RIKA MANSUETO LIBRARY GRAND READING ROOM. PHOTO BY TOM ROSSITER.

The OI

For the OI, which since its founding in 1919 has led groundbreaking research of ancient Middle Eastern civilizations, the exhibition invigorates and reinterprets work and research that is often hidden from the public eye.

“Ann Hamilton’s installation makes the ancient past tangible,” said Jean M. Evans, the OI Museum’s Chief Curator and Deputy Director. “By taking these artifacts out of the Museum and transposing them onto such a prominent space—but one where you don’t expect to see them—the installation makes us think about why ancient civilizations, our beginnings, are still so important and relevant.”

The OI’s centennial provided an impetus for a major reinstallation of the objects on display. For this reason, many of the OI’s most extraordinary small objects were out of their cases and available to Hamilton for this project. “Our centennial is a time to reflect on a century of accomplishments, but just as importantly it is an occasion to look to the future, set new, ambitious goals, and expand our scope,” said Christopher Woods, OI director and the John

A. Wilson Professor of Sumerology. “Fostering greater engagement with the contemporary arts is critical to this vision and a major focus of our centennial celebrations. We are delighted that an artist of Ann Hamilton’s caliber has found inspiration in our collection and has partnered with us on this evocative installation.”

A professor of art at Ohio State University, Hamilton is known for site-specific installations that examine how knowledge is shaped by language and touch. Her recent projects include *Chorus*—a text-based marble mural in New York City’s WTC Cortlandt Station—and *Oneeveryone*, a series of portraits shot through translucent polyurethane sheets.

“What we feel in the images is the tactile point of contact,” Hamilton said. “We know things, or the felt quality of things, not because we have more information but sometimes because there is less.”

Just as historical perspective shifts in time, these translucent images change depending on the vantage point of the viewer. One angle might throw the figures against a concrete backdrop; if the viewer takes a few steps, the images may rest instead on trees or clouds.

“The importance of the Middle Eastern collection at the University of Chicago Library is recognized by scholars throughout the world,” said Brenda Johnson, director and University librarian. “The Library shares the OI’s commitment to rigorous explorations of the world’s history and is pleased to celebrate this important centennial by hosting Ann Hamilton’s *aeon* and the exhibition in the Special Collections Research Center.”

Since its founding, the OI has led a century of excavations and research projects throughout the Middle East, many of which continue today in countries including Egypt, Iraq, Turkey and Afghanistan. The comprehensive and rigorous work of OI scholars deciphers ancient languages; reconstructs histories, literatures and religions of long-lost civilizations; and creates transformative dictionaries that serve as cultural encyclopedias essential to understanding the ancient world.



ABOUT THE AUTHOR: Jack Wang is the news editor for the University of Chicago’s Office of Communications. He has worked at UChicago since 2018.



STAGING CONCEPTS

A Trex® Company

**CUSTOM STAGING SOLUTIONS
FOR COLLEGIATE THEATERS**

www.stagingconcepts.com





JUDSON COLLEGE LOSES ITS STRUGGLE TO SURVIVE

by Lisa Gibbs, EdD

In a rural Alabama town of just over 10,500 residents sits the nation's fifth oldest college for women. The Judson Female Institute was one of the first colleges for women in the South, founded in 1838, with the first classes conducted in a house and a student body of nine. Members of the Siloam Baptist Church believed "that educating women would not only improve the lives of their students, but would also strengthen families, communities, churches, and society as a whole" and sought to build a school with the same quality of education as Harvard and Yale.

The Judson Female Institute was named to honor the first female missionary to represent the United States in Burma, Ann Hasseltine Judson. The school encouraged and empowered women to develop their intelligence and talents and use this knowledge to improve society. Early graduates worked to improve conditions for plantation and factory workers, lead suffrage efforts in the state, preserve native plants, and establish national forests.

After enduring the Civil War, Reconstruction, smallpox, and suffering the loss of the campus main building to fire, enrollment expanded. In 1904 the Alabama State Legislature amended the school's charter to create Judson College. Due to financial concerns during the 1930s, there was talk of merging Judson with two other state Baptist affiliated schools. However, the college remained independent and dedicated to helping women develop their God-given abilities to improve society.

Judson's Historic Past

An influx of veterans utilizing the GI Bill after World War II ended in 1945 helped Judson

The Judson Female Institute was named to honor the first female missionary to represent the United States in Burma, Ann Hasseltine Judson. The school encouraged and empowered women to develop their intelligence and talents and use this knowledge to improve society. Early graduates worked to improve conditions for plantation and factory workers, lead suffrage efforts in the state, preserve native plants and establish national forests.

flourish. By the early 1960s, Judson became a model of Christian liberal arts colleges for women. In 1968, the charter was re-written to change language from "white females" to "females" and admissions were opened to all women.

The Alabama Womens' Hall of Fame was built on the campus in 1970 to honor women who made significant contributions to the state. By the 1990s, Judson College had eighteen majors and twenty-four minors, eleven pre-professional programs, and a

distance learning program toward a bachelor's degree. In 1993 the college was placed on the National Registry of Historic Places, and a multi-million dollar renovation project in 2003 created a state-of-the art educational space in Jewett Hall, which remains at the heart of the campus. In April of 2021, Judson held its 183rd commencement, celebrating nearly two centuries of educating women.

Judson College is now filing Chapter 11 bankruptcy and will not open in the fall of 2021.

Be. Overly. Protected.

Acoustic Doors

Metal



- Metal Swinging Doors
- Fixed Window Systems
- STC ratings from 43 to 57
- Available with up to 3-hour fire labels

Wood Finish



- STC ratings of 43 through 49
- Dual-glazed Vision Lights
- Wood veneers and plastic laminates
- 3/4 hour and 20 minute fire labels

Bullet-Resistant Doors

Metal



- Weapon Protection Levels 1-8
- UL Standard for Safety 752
- Fixed and Teller Window Systems
- Pass-Throughs, Gun and Voice Ports

Wood Finished



- UL Standard for Safety 752
- Weapon Protection Levels 1-8
- Single or pair configurations
- Wood veneers and plastic laminates

OVERLY
DOOR COMPANY

Phone: 1-800-979-7300 • Fax: 724-830-2871 • E-mail: overly@overly.com • Web: www.overly.com

A WARM WELCOME



A new semester is on the horizon. Let's plan a warm welcome to help bring students back safely. From custom printed tents and table covers, to sidewalk signs and hand sanitizer dispensers - we're here to help. Shop with us online at PostUpStand.com/WelcomeBack21.

POST  STAND
YOUR MESSAGE IS OUR MISSION

SCAN TO SHOP



FIND US
ON SOCIAL!



Through its 183 year history, Judson has often struggled to survive. The leadership overcame obstacles in ways that reflect the school's mission—to matriculate students who are “well-adjusted and productive citizens through the transmission of knowledge, the refinement of intellect, the nurturing of faith, the promotion of service, and the development of character.” Creativity, critical thinking, and commitment to faith and service helped the college stay afloat for nearly two centuries. However, declining enrollment since 2000 and the unforeseen challenges of the pandemic in 2020 caused the school to reassess its future.

Looking at Options

A successful fundraising campaign to keep the school open through May of 2021 was launched in the fall of 2020. At the same time, leadership at the college commissioned Fuller Higher Ed Solutions to conduct an in-depth review of college finances and meet with focus groups in an effort to determine the best steps forward. Fuller's report was issued in February 2021 and offered insights and solutions for the college.

The Fuller report acknowledged Judson College's uniqueness in academia—a Baptist college for women located in rural Alabama. This fact distinguishes Judson from the majority of private colleges and universities in the United States and could be considered an asset. Focus group interviews resulted in alumnae sharing memories “as illustrations of the impact Judson had on students finding their voice, learning how to lead, and building confidence as they mastered subject material and prepared for their future.” Faculty, staff, students, and alumnae expressed a high level of support for the college and positive suggestions for its future.

A Difficult Decision

According to the report, the “college was already in a difficult financial condition prior to March 2020 when the pandemic changed the way residential colleges function.” Expenditures per student were in excess of income per student. The gap in revenue meant the college must “generate 60% of revenues from non-student, philanthropic sources; generating two thirds of revenues from donations on an annual basis is not realistic.” Deferred maintenance and stagnant wages were also an issue. The report indicated Judson needs considerable infusion of cash to address the deficit and invest in turnaround efforts.

The report noted the decline in interest in gender specific choices in higher education, citing that in “1960 there were 230 colleges



ANN HASSETTINE JUDSON

for women in North America; today there are 36.” A comparison of data from the Women's College Coalition (WCC) showed Judson to be among the bottom in terms of endowment, enrollment, and retention. Judson College showed very little similarity with other women's colleges, other than the fact of being a college for women. The analysis was completed in hopes of Judson using the experiences of those institutions to guide strategies and decisions.

Changing Landscapes

Other important factors addressed in the Fuller report include a decrease in the number of high school students in Alabama and surrounding states and the changing perception of Christian colleges and universities. The report concluded that “the college has two primary options to consider, either closing with dignity or investing in a turnaround.” Specific recommendations included merging with another college, becoming co-educational, and creating

a well-funded strategic plan. The decision to close any institution of higher education is extremely difficult and heartbreaking. Judson College has a long and rich history of educating and empowering women. While the challenges of the 21st century have affected all private colleges and universities, the experience of Judson may be of use to other church affiliated and gender specific institutions as they navigate the changing landscape of what society wants out of higher education.



ABOUT THE AUTHOR: PUPN staff writer Lisa Gibbs earned her Ed.D. in Higher Education Administration in 2018. She is an advocate for arts, particularly dance, in education and for increasing the financial well-being of artists through financial education.

Are You Promoting a Culture of Wellness on Campus?

MicroFit has provided hundreds of colleges and universities products designed to assess, educate, track, and report on specific health behaviors and fitness outcomes through their:

- ▶ Recreation and Fitness Centers
- ▶ Health and Kinesiology Classes
- ▶ Faculty and Staff Wellness Programs
- ▶ Community Wellness Initiatives
- ▶ Fitness and Wellness Research Projects

"Stanford University started a campus-wide wellness program in 2007 utilizing the MicroFit FAS-2 System to provide fitness assessments for faculty and staff. It's ease of use and report functions have made this component a valuable tool in promoting a culture of wellness on campus ever since."

*Ms. Jennifer Sexton
Coordinator of Recreational fitness & Wellness
Stanford University, Stanford, CA*



MicroFit, Inc. has been producing quality Fitness / Wellness assessment software and medical grade testing equipment since 1986. Several hundred colleges / universities have benefited by using a wide range of MicroFit products designed to:

- 1.** Provide comprehensive, easy to use, Fitness Profile software for campus recreation, human performance labs, Kinesiology – Sports Science classes, and for a growing number of personal training certification courses.
- 2.** Provide a comprehensive Wellness Profile Questionnaire to identify specific lifestyle behaviors with constructive recommendations on how to improve one's overall wellness score.
- 3.** Provide comprehensive, easy to understand, Lifestyle reports which help to educate, motivate, and encourage students to improve their own fitness level, general health, and personal productivity.

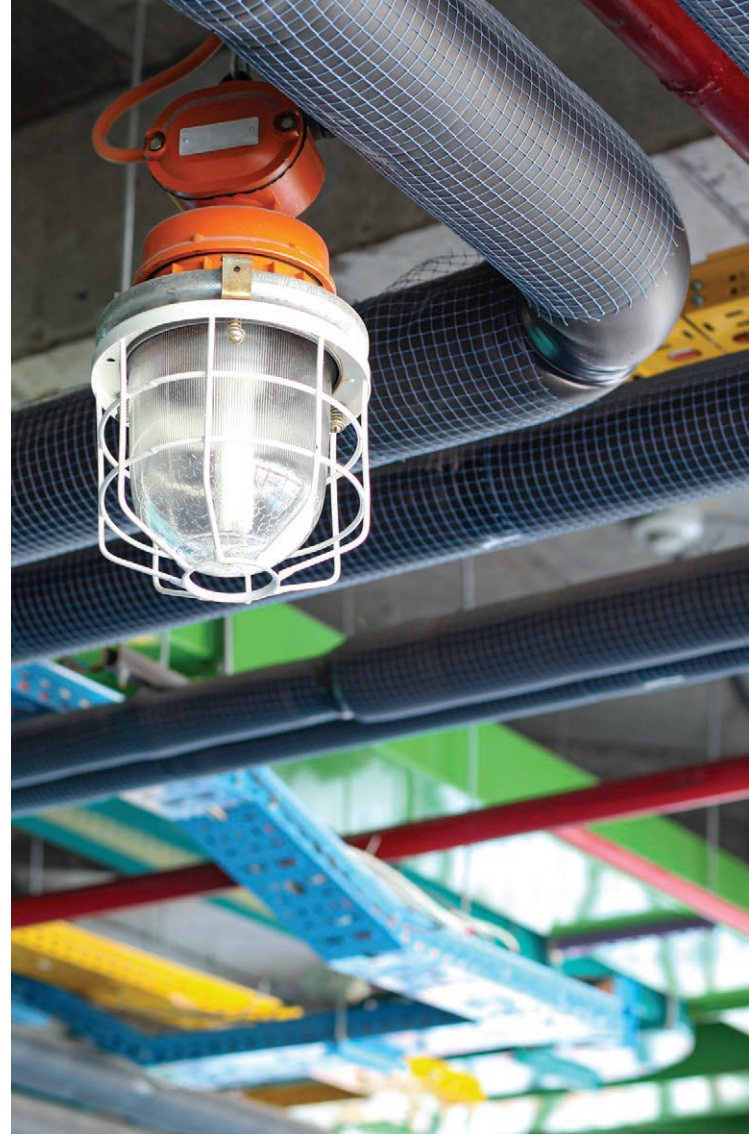
- 4.** Provide a full range of quality fitness testing equipment, including their advanced FAS-2 System with integrated accessories which have been a part of MicroFit's product development for over 30 years.

In summary, Fitness / Wellness Assessments are now considered one of the "best practices" to enhance an overall campus life experience; with HealthWizard software, group analytics can also allow organizations to create "evidenced based outcomes" to assess the results from their investment in staff, facilities / equipment, as well as their overall health promotions and wellness programming efforts.

Get Started Today with a "quick tour" webinar & Free HealthWizard Trial Download.

MicroFit Wellness and Fitness Systems • MicroFit.com • 800-822-0405 • sales@MicroFit.com





SHOWCASE OF EXCELLENCE

Our readers requested from us a special annual feature to highlight providers that provide quality products and services for private colleges and universities. This "Showcase of Excellence" appears each year in our June issue. This special section is filled with full and half page ads, offering both case studies and product showcases for service and product providers exclusive to the higher education market.

As you look through these pages, you will find more in-depth information on these quality providers, their products, and demonstrative case studies that can help you in your mission of providing a quality experience across your higher education facilities. And just as you may face the challenge of not having enough time to communicate every aspect of your higher learning meccas with your students and communities, we were limited by available space in this issue, so could not include every single one of the companies that we know can help you. Our hope, however, is that you will enjoy the information that space allowed us to include.

Enjoy the "Showcase of Excellence," and may you continue to be successful in providing quality facilities and experiences to the many lives your colleges and universities touch.

PROTECT THE SYSTEMS THAT PROTECT

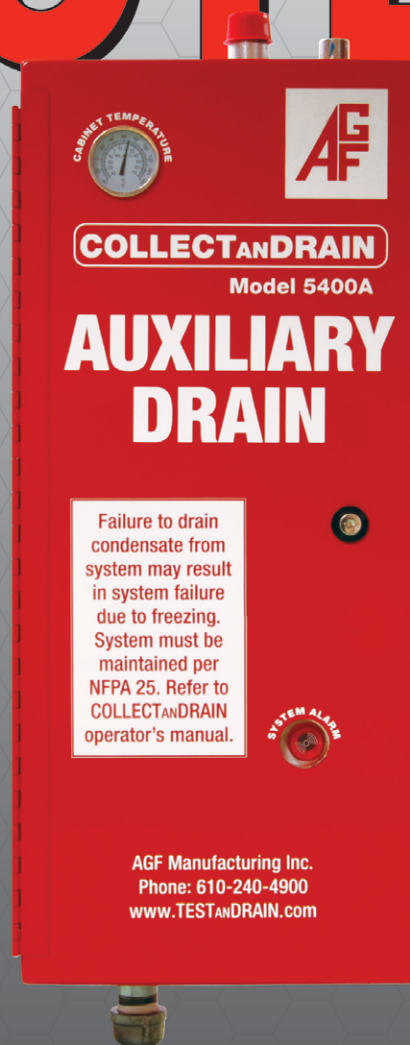
COLLECTANDRAIN®

M5400

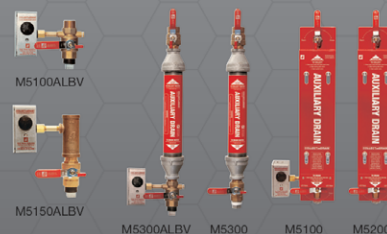
Fire sprinkler systems protect life and property, the COLLECTANDRAIN® M5400 protects dry fire sprinkler systems. Auxiliary drains that freeze and break are the main cause of fire sprinkler failures in winter months. Stop replacing auxiliary drains that freeze and break with auxiliary drains that freeze and break.

Less than half an ounce of water can break valves on auxiliary drains. This may result in false activation and system failure. The COLLECTANDRAIN® Model 5400 provides a temperature controlled environment for problematic auxiliary drains. This increases their capacity to collect condensation in

colder temperatures and helps prevent unnecessary freeze-ups. Don't wait until auxiliary drains break, install the M5400.



For other solutions visit our website



www.collectandrain.com

Part of Utah State's Maverik Stadium Renovation

The AGF COLLECT_{AND}DRAIN® M5400 Protects Maverik Stadium's Fire Sprinkler Systems from Freeze-Ups



of the Maverik Stadium Renovation. The M5400 goes beyond our patented prevention features that protect fire sprinkler systems from being tripped by improper maintenance or vandalism. The M5400 provides a temperature-controlled environment that deters system failures caused by freezing condensation in dry pipe system auxiliary drains. The heated and insulated cabinet contains an auxiliary drain with a float switch to monitor condensation levels. When condensation reaches a level where maintenance is needed, the float switch activates an audible alarm and LED warning light, making freeze-ups a thing of the past. It also features fire control panel notification capabilities.

Dry Fire Sprinkler System Auxiliary Drains can cost \$5,000 to \$10,000 or more every time they fail. Every year, building owners spend thousands of dollars from their operating budget replacing auxiliary drains that collect water, freeze, and break.

John Blankman, President of Paradise Fire Protection, learned about AGF and the M5400 at an American Fire Sprinkler Association Trade Show in Phoenix. Frustrated with standard auxiliary drains that freeze and break, John was looking for a more reliable product that would prevent freezing. John was impressed with the M5400's heated cabinet, and stated, "The 5400 would ensure that they did not have failures at the new stadium."

USU's Maverik Stadium Redevelopment Project includes a newly built press box, 24 luxury suites, 20 loge box suites, 700 club seats, a student-athlete training area, and state-of-the-art media, technology, and operations upgrades. The project also significantly boosted the number of public restrooms and upgraded concessions.

"Part of Utah States Maverik Stadium Renovation" *FPC Magazine*, Sept. 2016

Visit www.agfmfg.com for more information on the M5400 and to learn about AGF's other product lines.

Utah State University, located in the Northern Utah Mountains, is known for its top-notch academics and research, and nationally recognized for its athletics. In August 2016, Utah State's Division 1 Aggies returned to their newly renovated and renamed football stadium for the start of the 2016 season.

While fans, students, staff, and public celebrate the premium enhancements and state-of-the-art upgrades, they will also appreciate the safety improvements most people never see or notice, but are critical to ensure the safety and protection of both lives and property.

AGF Manufacturing is proud to announce that our COLLECT_{AND}DRAIN M5400 Auxiliary Drains are part

BUILT TO LAST



CLEARSPAN STRUCTURES

Every program and facility is looking to instill greatness in their athletes. ClearSpan has been helping programs and businesses of all sizes do just this for over 40 years by creating custom athletics building solutions. ClearSpan's fabric structures allow facilities to keep their athletes training year-round, regardless of weather, and offer several benefits when compared to traditional structures. Facilities that integrate a ClearSpan fabric building can expect superior versatility, ideal sporting environments and maximum strength and durability.



THE CLEARSPAN ATHLETICS ADVANTAGE INCLUDES:

RELIABLE COVERAGE – Play, train and compete in any weather

EXPANSIVE SPACES – Build to nearly any size

ABUNDANT NATURAL LIGHTING – Soft on the eyes and reduces utilities

VERSATILE BUILDINGS – Fabric, metal and hybrid cladding available

CLEAR SPAN INTERIORS – No obstructive posts to hinder play

ULTIMATE DEPENDABILITY – Industry-leading warranties

IN-HOUSE FINANCING – Start your next project today

ONE-STOP SHOPPING – Outfit buildings with everything you need

ClearSpan's fabric buildings are also designed and constructed to last, and feature industry-leading warranties to go along with it. The structures' frames are made from triple-galvanized steel that is corrosion resistant, and is backed by a 50-year warranty. ClearSpan offer multiple fabric cover options. These covers feature rip-stop weaves that stop any potential tears in their tracks, and they come in a range of warranties from 20 to 30 years, ensuring these structures last decades into the future.

**FOR MORE INFORMATION, VISIT
WWW.CLEARSPAN.COM OR CALL 866.643.1010**

LET'S BUILD YOUR IDEAL STRUCTURE



**SUPERIOR
BUILDING
SOLUTIONS
FOR OVER
40 YEARS**

INDUSTRY-LEADING WARRANTIES

ClearSpan structures are built to last decades into the future.

ENERGY-EFFICIENT DESIGNS

Save money on a monthly basis and maximize profitability.

EXPERT CONSULTATION

Industry experts are on staff to provide invaluable advice.

METAL AND FABRIC BUILDINGS

Building solutions for any application in any industry.



www.clearspan.com
1.866.643.1010

ON-DEMAND TECHNOLOGY FOR ON-THE-GO STUDENTS

Self-Service DISPENSING KIOSKS

- **Space-Saving**
- **Experience-Enhancing**
- **Forever-Flexibility**

Break Down Barriers and Join 100+ Campuses In Making LaptopsAnytime Automated Dispensing Kiosks Your Go-To Self-Service Solution for On-the-Go Students.

Dispense Wide Range of Dell, HP, Lenovo & Apple Laptops and 110V Portable Power Chargers and Accessories.

Build Your Own Kiosks **Mixing-N-Matching** Laptops, Tablets And Now **110V Portable Power Outlets** Separated By Row Module.



OVER 2.5 MILLION
ANNUAL CHECKOUTS AND GROWING

2,500,000

Trusted Technology Branded to Your Local Look-n-Feel



LAPTOPSANYTIMETM
Automated Checkout Kiosks

1-877-836-3727 • LaptopsAnytime.com

Long Term Checkout

Dispense Power Cords, Laptop Bags And Accessories In Addition To The Laptop Itself. Now You Can Accommodate Extended Checkouts.

The Perfect Solution To Short Term and/or Long Term Checkouts.



New

**Imagine 12-60+ More Outlets
In Your Facility**
Portable 110V =Max Flexibility



Finally You Can Set Up A Self-Service Program To Dispense
Powerful, Portable 110V Power Chargers.

*1 charger can power up to
3 devices at once*



Trusted Technology Branded to Your Local Look-n-Feel
LAPTOPSANYTIME™
Automated Checkout Kiosks
1-877-836-3727 • LaptopsAnytime.com

SUPERIOR[®]

AMERICA'S MOST COMPLETE LOCKER LINE[®]

**Recruit Like A Champion
Demand Superior[®] Recruiter Lockers**

**NEW
RECRUITER²**
WOOD SPORT LOCKER

RECRUITER

SUPERIOR Wood Sport Lockers[™]



800-776-1342

✉ info@ListIndustries.com

🖨 ListIndustries.com



ADVERTISEMENT

Game Ready

All-new for 2021, List Industries Inc.® is introducing its New Recruiter2™ Wood Sport Locker Quick-Ship Design lockers with modern contour edges and many included features.

Available in 24" Wide x 24" Depth x 84" Height and 30" Wide x 24" Depth x 84" Height, they can be ready to install in as little as two weeks.

Reinforce your commitment to your players and imagine the powerful impact a modern, luxurious and efficient locker room will have on your ability to recruit the best players to your program. List Industries has re-engineered the New Recruiter2™ Wood Sport Locker with sleek Quick-Ship Design. Their lockers bring an upscale and luxurious design to your locker room with a very reasonable life-cycle cost. They use the finest furniture-grade plywood to keep them looking like new year-in and year-out. Each locker is handcrafted by expert craftsmen using state-of-the-art equipment. The Recruiter2 locker is shipped fully assembled and ready to install upon delivery. Custom accessories are available to add to the player's enjoyment of their locker. The company's experts will help you throughout the entire process — from initial design to project completion.

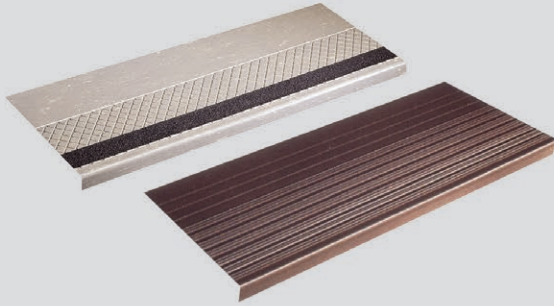
List Industries has earned its slogan as America's Most Complete Locker Line by offering the largest selection of locker styles, materials, sizes, colors and functionality all while maintaining high standards of quality, customer service, packaging, and on-time delivery. They offer metal, wood, phenolic and plastic lockers; designed to serve the locker needs of any facility from health and sports clubs to schools and universities to professional sports arenas and stadiums.

For more information on List Industries Inc.® visit listindustries.com or call 800-776-1342.

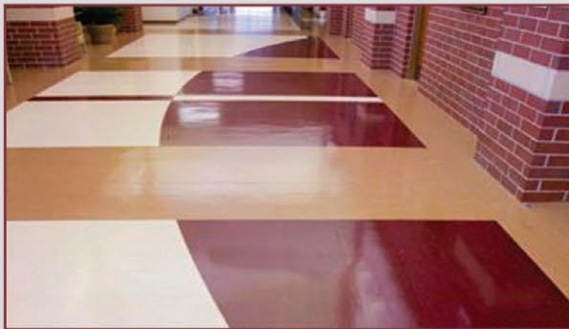


ONE SOURCE FOR ALL YOUR FLOORING NEEDS

Rubber & Vinyl Stair Treads for Interior Applications



Sheet Rubber



Entrance Matting



Rubber Stair Treads for Exterior Applications



40 Mil LVT



For more information
visit our website at
www.mussonrubber.com
or email us at
info@mussonrubber.com



MUSSON RUBBER CO.

P.O. Box 7038 • Akron, Ohio 44306
800-321-2381 • Fax 330-773-3254
info@mussonrubber.com • www.mussonrubber.com



Since 1945, Musson Rubber has been a pioneer and leader in the development, manufacture and distribution of safety stair coverings and flooring materials. Musson Rubber specializes in stair coverings and entrance matting for commercial, institutional and industrial use. Our website contains the most complete and comprehensive line of top quality rubber and vinyl stair coverings and entrance mats for use in public buildings. We have been involved in general production, maintenance, MRO applications, and we have been working with our customers and suppliers throughout the region for over 70 years.

Musson Rubber is your source when you need reputable products from top suppliers and trusted service.



MAKE STAIRS & LANDING SAFE WITH MUSSON VINYL TREADS & TILE

- Excellent for commercial, industrial, and institutional use
- Vinyl treads are available in four colors and a variety of sizes and styles
- Contrasting 18"x18" vinyl tiles have a durable 40 mil wear layer
- Matching cove risers are also available.



RUBBER SPORT FLOOR

- Durable spike resistant flooring
- Made of recycled rubber combined with color flecks of new rubber
- Available in roll goods, blue down, or interlocking tiles in a variety of colors

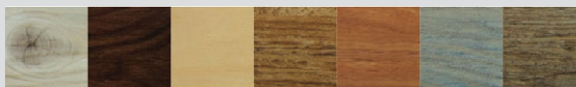


RECYCLED ENTRANCE MATTING

- Made of recycled PVC plastic
- Brushes off sand, dirt, and slush from shoes and carts
- Open grid drains away water and debris
- Snap together tiles are easy to install and replace
- Use in recessed areas or surface with beveled edges

LVT TILE WITH 40 MIL WEAR LAYER

The extra-thick helps to combine the beauty and feel of antique wood with the durability required for high-traffic applications. These planks are easy to maintain; there are no waxes, sealers, or other finishes required which reduces labor and chemical costs. Available in 7 seasoned wood patterns.



MUSSON RUBBER CO.

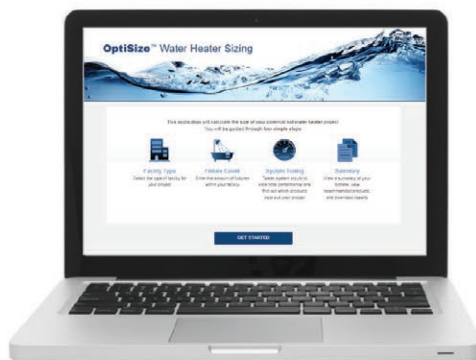
P.O. Box 7038 • Akron, Ohio 44306
800-321-2381 • Fax 330-773-3254
info@mussonrubber.com • www.mussonrubber.com

Power. Performance. Endurance.

Dynamic[®]
Water Heating

PVI's Dynamic Water Heating[®]

A revolutionary water heating system design and application approach that features greater BTU input for quick reaction, an optimized storage buffer for extra power when needed, the benefit of high water turnover, and exclusive duplex stainless steel AquaPLEX[®] construction for unmatched performance and longevity. Learn more about PVI's Dynamic Water Heaters at pvi.com.



OptiSize[®] will help you select an optimally-sized water heater for your next project



800.784.8326 | pvi.com

©2021 PVI

PVI's Dynamic Water Heating Solutions for Today's Facility Designs

PVI® is addressing water heating needs in retrofit and new construction through Dynamic Water Heating™, a revolutionary water heating system design and application approach that integrates innovative products with advanced technology to create customer-friendly solutions. Dynamic Water Heating helps design solutions with greater BTU input for quick reaction, optimized storage buffer for extra power when needed, high water turnover, and unmatched performance and longevity.

Dynamic Water Heating



With Dynamic Water Heating, the right-sized commercial ASME water heaters that balance BTU input and storage can be selected more efficiently. Available in numerous energy sources, including gas, electric, steam, boiler water, and oil, PVI's Dynamic Water Heating solutions feature energy inputs from 199 MBH – 7000 MBH and range from instantaneous on-demand water heating to storage-type heaters.

Optimize Water Heater Size

PVI's Dynamic Water Heating solutions also incorporate OptiSize®, an online and app-based tool that helps select the optimally-sized water heater for any project. It calculates the size of the hot water heater project based on facility type and fixture count, as well as provides system tuning capability for better performance.

High Reliability Via AquaPLEX

Fabricated from corrosion-resistant AquaPLEX duplex stainless steel, PVI long-lasting water heaters are extremely durable, require no linings or anodes, and include the best warranties in the industry. AquaPLEX blends 300 and 400 series stainless steel to create an extremely strong material that is highly resistant to aqueous corrosion in potable water at any temperature, as well as chloride stress corrosion cracking.



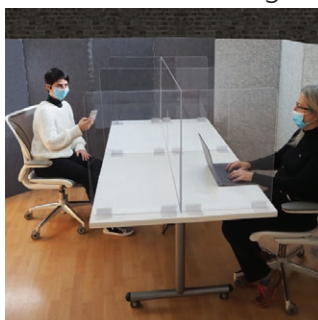
800.784.8326 | pvi.com

Engineered Water Heating Solutions®



Tackle your learning challenges with **SMARTDESKS®**

Social Distancing



Classrooms



Multi-Media Podiums



Sit Stand Desks



Create your own collaborative learning environment with SMARTdesks.

Our comprehensive services for classroom layouts, custom furniture, and technology integration are here to support your organization's mission of learning, no matter the challenges we face.

SMARTDESKS®

Work Intelligentlysm

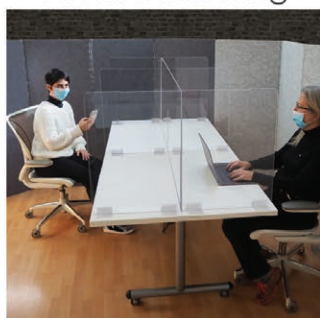
800 770 7042 | www.smartdesks.com

©2021 CBT Supply, Inc. dba SMARTdesks® All rights reserved. Collab®, flipIT® and SMARTdesks® are trademarks of CBT Supply, Inc. flipIT® US Patent No. 7,509,912



Make hybrid learning easy with **SMARTDESKS®**

Social Distancing



Classrooms



Multi-Media Podiums



Sit Stand Desks



Create your own hybrid learning environment with SMARTdesks.

Our comprehensive services for classroom layouts, custom furniture, and technology integration are here to support your organization's mission of learning, no matter the challenges we face.

SMARTDESKS®
where design meets technologysm

800 770 7042 | www.smartdesks.com

We're Still Listening.

Water professionals know that swimmers demand clear and clean water. That's why we continue to work hard to make your job easier. Make chlorination easy with the **ACF Series** Calcium Hypochlorite Feeders.

Clarify with Vantage Poly-A Clarifying Tablets. This unique and powerful tablet water clarifier is not just to clear up cloudy water after a long weekend. As a maintenance product, it works with your filtration system to remove organic and inorganic compounds to prevent dull and cloudy water.

SANITIZE with the **ACF Series** Calcium Hypochlorite Tablet Feeders

- ⌘ Safer than liquid systems
- ⌘ Runs "Clean" - Less Maintenance!
- ⌘ Simple, Efficient, and Durable
- ⌘ Systems available for ANY size pool
- ⌘ NSF/ANSI Standard 50 Certified

CLARIFY with the **VPF-20** Poly-A Tablet Feeder

- ⌘ Unique tablet clarifier
- ⌘ Easier than liquid systems
- ⌘ Removes organic and inorganic compounds
- ⌘ Increases filter effectiveness
- ⌘ Proven cryptosporidium removal



AllChem Performance Products, Inc.
Phone: 352.378.9696
FAX: 866.343.1216
email: vantage@allchem.com
www.vantagewatercare.com

VANTAGE®

Copyright 2015
VANTAGE is a registered trademark of
AllChem Performance Products, Inc.

Beautiful Pool Water has never been this easy...



..until now.

Introducing the **VANTAGE® ACF Series** Calcium Hypochlorite Tablet Feeders

- ⌘ Unmatched water quality
- ⌘ Safer than liquid systems
- ⌘ Runs "Clean" - Less Maintenance!
- ⌘ Simple, Efficient, and Durable
- ⌘ Systems available for ANY size pool
- ⌘ NSF/ANSI Standard 50 Certified
- ⌘ Uses VANTAGE Calcium Hypochlorite Tablets
- ⌘ Majority of Parts are Interchangeable

A complete line of chemicals, including our unique Poly-A Tablets is available.

Thanks in no small part to your input, our introductory ACF-60 model feeder received excellent reviews from the field. So good, in fact, that facility managers and operators, builders, and designers requested the same simplicity of design, reliability and ease of operation in both smaller and larger capacity feeders. Again we listened, and the result is the ACF-18 for commercial systems under 50,000 gallons, and the ACF-250 for systems up to 1,000,000 gallons of water. All three Vantage feeders are NSF/ANSI Standard 50 certified.

VANTAGE®: We're Still Listening.

AllChem Performance Products, LP
6010 NW First Place
Gainesville, FL 32607
www.vantagewatercare.com

Phone: 352.378.9696
FAX: 352.333.7436
email: vantage@allchem.com



VANTAGE is a registered trademark of AllChem Performance Products, LP. Copyright 2008

It takes a Viking to...

PROTECT YOUR ASSETS



DON'T PUT YOUR CAMPUS AT RISK

We don't mess around when it comes to your greatest assets. You need it **secure and battle-tested**, day in and day out, year after year.

Viking Entry Systems and Emergency Phones are built to last. Available Enhanced Weather Protection will provide added defense for outdoor use.

Say goodbye to unreliability, and hello to rugged durability. **YOU NEED A VIKING.**



Start planning your installation today!

715.386.8861

vikingelectronics.com

VIKING

 **DESIGNED
MANUFACTURED
& SUPPORTED**

BATTLE-TESTED & WORRY FREE



When it comes to security and communication, strength matters. At Viking Electronics, we combine the industry-leading innovation of today with the tough-as-nails durability of the past.

Whether your system calls for analog or VoIP, multiple access points, or color video...

YOU NEED A VIKING.

Start planning your installation today!

715.386.8861

vikingelectronics.com

 **DESIGNED
MANUFACTURED
& SUPPORTED**

VIKING

C L E A R F O C U S I N N O V A T I O N S

Introducing Tech-i UVC

C L E A R F O C U S I N N O V A T I O N S

"Knight in Shining Armor"

We're making colleges & universities affordable environments to come back to, learn in, grow in, and be safe in.

Real Work Autonomous Robotics, "UVC Series" for Colleges & Universities

Safe and Efficient Ultra Violet-C Disinfecting Autonomous Robotics.

Designed to fight the spread of Covid-19 pathogens and other infectious diseases on high-touch surfaces.



Open classrooms safely and immediately. CFI eliminates the need for Cap Ex investment.

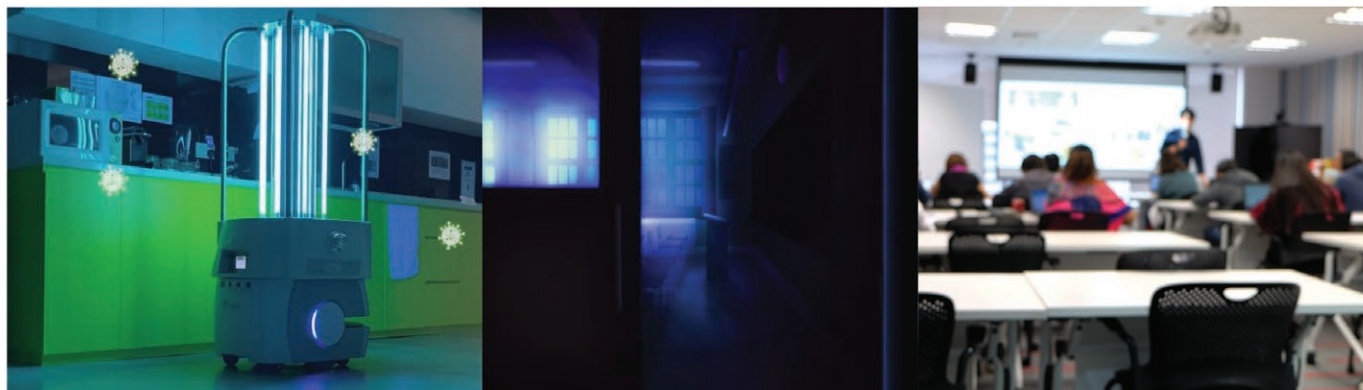
Learn more about our market-ready RaaS (Robotics as a Service) Op Ex product and maintenance agreement options for Education Clients.

A U T O N O M O U S / I N N O V A T I O N / I N T E R A C T I V E / I N S P I R A T I O N

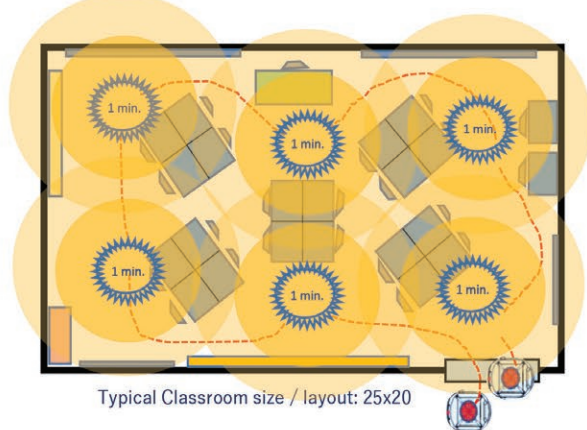
For Sales and More Information Contact CFI at 650.533.2979 . sales@clearfocusinnovations.net

CLEARFOCUS INNOVATIONS

CFI Real Work Autonomous Robotics, "UVC Series"



UVC Disinfection	Full Coverage Autonomous Navigation	Easy Integration	Specifications	Safety	Important Notes On Effectiveness
<ul style="list-style-type: none"> • Proven technology that destroys bacteria and viruses on high touch surfaces in high traffic areas in minutes. • Specific doses of UVC (UVC Dose = UVC intensity x time) applied to pathogens break down DNA / RNA bonds. Pathogen no longer replicates or lingers. • UVC energy has been shown to reduce pathogens by 99.9%. • Quickly disinfect med. to large rooms including schools, universities healthcare environments, patient rooms, nursing and long-term care facilities, office spaces, elevators, gyms, spas, bathrooms, showers & other high touch areas. • Tech-UVC operating at 10 feet & 360° takes less than 1 minute to inactivate coronavirus to 99.9%. MRSA in less than 10 minutes. C.diff. in less than 16 minutes. 	<ul style="list-style-type: none"> • Narrow corridor navigation - Designed to navigate through extremely narrow pathways and clearances. As narrow as 900mm (35.4 inch). • Eight individually validated UVC lamps deliver balanced and uniform high-output UVC flux to disinfect pathogens from surfaces. • Pre-programmed or manual disinfection cycle times. • Schedule 24/7/365. UVC units will move between programmed and (high traffic) focus areas autonomously. Eliminating the need for any human intervention. Ideal for evening hours with no staff on premises. • Some assistance may be required if doors need to be manually opened and closed. 	<ul style="list-style-type: none"> • Seamless integration allows for minimal implementation time. • Simple and intuitive user interface and controls. • Short learning curve that allows for fast deployments with few staff and resources. • One time set up / building mapping. Integrates with all automatic doors, elevator access, PABX, fire and safety systems. • Self-Navigation Obstacle Avoidance. • Full autonomous operation based on Techmetrics extensive and extremely reliable Mobile Robotics technology. 	<ul style="list-style-type: none"> • On-board and remote user interface with interactive touch displays for easy set up, tracking and maintenance. • 24V 60Ah battery operation. 3.5 hours of UVC operation @ 80% duty cycle. • 4 hours recharge time • 1.84 kWh nominal power usage. • Home base docking for auto charging • Rated Life: 13,000 hrs. Running hours at 25% duty cycle (6 years lamp life) • High performance LIDAR & SICK Dual side Safety compliant and navigation lasers. • 8 slim line UVC lamps & polished reflector for maximum intensity and 360° coverage. • DIMS: 65.63in./ 1667mm H x 25.2in./ 640mm W x 28.62in. 727mm L. Weight: 114Kg. 	<ul style="list-style-type: none"> • 100% Autonomous navigation with 4 safety lasers and emergency stop. 360° motion sensors that automatically shuts off the UV lamp when human interaction present. • Formed stainless tube structure protects lamps. Laser driven obstacle detection & avoidance. • Autonomously, safely and thoroughly sanitizes schools & campus facilities at night. Protects students, faculty & staff during the day. 	<ul style="list-style-type: none"> • No warranty is offered, or responsibility taken in regards to the process or efficiency of the device as CFI has no control over the use of the device. CFI makes no claims to the actual log reduction of pathogens, as it can greatly vary depending on the environment. • UVC is an adjunct cleaning method, and dirt, dust, and debris should be removed from surfaces before UVC treatment. • Prolonged, direct exposure to UVC light can cause temporary skin redness and eye irritation, but does not cause skin cancer or cataracts. • Tech-UVC devices are designed with safety in mind and, when used in accordance with the Operation and Maintenance Manual, do not allow exposure to UVC irradiation, and do allow for safe operation and maintenance.



UVC Exposure (mJ/cm ²) at Various Distances 1 mJ/cm ² = 1000 μW-s/cm ²				
	UVC-on	Travel within room (typical) UVC-off	Travel to next room (typical) UVC-off	Rooms covered in 3.5 hrs. of UVC run time (typical)
25x20 average classroom size	6min.	3min.	3min.	35
Time / Radius	1min / 1 meter			
charge Time	4hrs			
Cycles in 12 hours	2			70
2 robots				140
3 robots				210

The above chart is offered as a reference point, does not account for objects physically blocking UV ray transmission or school geography. Multiple robots ideally require their own charging stations.

ClearFocus Innovations, American Ultra ClearFocus Innovations, American Ultraviolet and Techmetrics are individual companies providing products, services and support for Techmetrics Tech-UVC Series products and solutions. American Ultraviolet is the leader in UV decontamination technology for over 60 years has manufactured more than 100,000 UVC germicidal fixtures that are safely operating in hospitals, schools and commercial environments around the world. Techmetrics Robotics, experts in Autonomous Mobile Robots (AMR) With superior in-house technology, smooth navigation and extended operating time. Techmetrics and CFI offer the broadest line of real work autonomous mobile robots available for a variety of markets including education, healthcare and hospitality. Data and specs may change without notice.



Final Assembly in the USA



Reseller Partners



Technology Partners



For More Information Contact CFI at
650.533.2979
sales@clearfocusinnovations.net

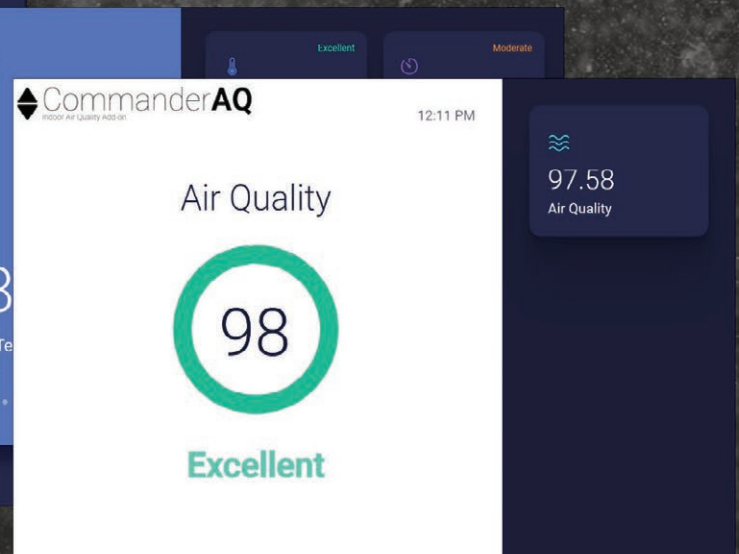
Indoor Air Quality VISUALIZATION beautifully REIMAGINED



Detailed, personalized backend



**Customizable public
facing kiosk mode**



Email Info@KMCControls.com for details



3 Ways IoT and Smart Building Automation Can Change Your Campus for the Better

Private universities have many unique challenges. Building automation is not least on the list.

Varying growth over time likely means there are several iterations and system types throughout campus. Competition has driven an increase of new, diverse types of managed spaces for students and staff. Stagnant endowments are driving a renewed focus on energy savings to steward available funds. No single solution solves these challenges, but rather a university needs to develop a holistic strategy. IoT and Smart Building Initiatives is a part of that strategy.

To solve these issues, you need a solid solution from a provider with expertise. KMC Controls has been a leading innovation vendor in the HVAC industry for over 50 years. With our Intel Market Ready Solution, KMC Commander, you are able to realize these benefits and build a holistic IoT strategy. Plus, we partner with industry leaders to bring the best overall edge-to-edge solution to our customers, from wireless sensors to analytics.

1 UNIFY YOUR BUILDING SYSTEMS

You have a lot of buildings on campus, each with their own HVAC or lighting platform (or no platform at all). When looking to develop and drive an IoT strategy, the first step is to bring all those systems into a single platform. No need to replace your systems, as the leading offerings on the market can use what's already there. Additionally, by using cloud-based solutions, make these systems more accessible than ever before.

2 DRIVE THE OPERATIONAL USE OF DATA

The most innovative solution providers in the space not only connect your systems. They also share that data with other industry-leading solutions. No one system can be all things to all people. That's why collaboration and interoperability is so important.

3 DEMOCRATIZE YOUR DATA INTO THE CURRICULUM

Nothing helps students understand new concepts more than real-world examples. For instance, use building data to teach math students in-depth regression analysis on CO2 and occupancy. Use the API to teach computer science students integration and app development. Use energy metrics to teach economics students regional utility analysis and cost-avoidance measures. The possibilities are endless.



Email Info@KMCControls.com for details

MEANGREEN™

M O W E R S

Commercial Electric ZTR
• All Day Battery Power •

Introducing the All-New

VANQUISH™

- Stand-on ZTR
- 52" or 60" cut
- Up to 7 hrs. per charge!



LOW NOISE

HALF the noise of
gas mowers



LOW MAINTENANCE

NO tune-ups needed



ZERO GAS

NO gas
(NO spills, NO mess)



ZERO EMISSIONS

NO fumes, NO pollutants



Making the case for Electric Mowers.

Commercial Grade. All Day Battery Power.

Not so long ago, you needed to be an environmentalist to make the case for battery-powered outdoor power equipment. Today you just need to use your business smarts and ask the right questions.

While it's natural to experience "sticker shock" if you are new to lithium ion power, once you have factored in the operational savings of switching from gas you may have a completely different view.

The BUSINESS CASE

Estimate of Operational Savings*



	EVO	RIVAL	VANQUISH	WBX-33HD
Operational Savings*	\$12-15/hour	\$8-10/hour	\$8-10/hour	\$4-5/hour
Annual Savings	\$12,480 - \$15,600	\$8,320 - \$10,400	\$8,320 - \$10,400	\$4,160 - \$5,200
5-Year Savings	\$62K - 78K	\$41K - 52K	\$41K - 52K	\$20K - 26K
10-Year Savings	\$124K - 156K	\$83 - 104K	\$83 - 104K	\$41K - 52K

*See our online calculator and make your own estimate: meangreenproducts.com/simple-savings-calculator

The PEACE OF MIND CASE

When you're expected to deliver top quality to your customer and top efficiency to your business, everything counts.

Reliability. Your equipment has to start, it has to run, it has to be easy to maintain, and it has to put in a full day's work, just like you. Any time that a mower spends in the shop—whether for routine maintenance like tuneups (there are *none* with Mean Green mowers) or major repairs—is time that it's not in the field. Electric mowers have fewer moving parts and that means less maintenance.

Efficiency. High ground speed (that doesn't sacrifice quality), reduced downtime (no refueling stops), and ease of operation all help you get the job done fast—so you can move on to the next one. Mean Green mowers, with speeds of up to 13 mph, are likely to leave your gas mowers in the dust! Plus, with their quiet operation, you can start residential jobs earlier in the morning (or finish them later in the day) without annoying your customers.

Employee Satisfaction. Keeping good help is never easy and most lawn service professionals experience more turnover than they would like. But when you take away the gas, the fumes, and the noise of typical gas mowers, and offer the comfort of an extraordinarily smooth ride, the work can be a pleasure.

THE FUTURE IS GREEN

Find a Dealer at:
meangreenproducts.com



★ USA
ENGINEERED AND BUILT

Assembled in the USA using domestic and foreign parts



SEATING THAT MAKES THE DIFFERENCE

BEVCO chairs provide flexible options that play an active role in keeping students engaged and empowered to learn. BEVCO's GreenGuard Gold certified chairs offer adaptable seating that is sustainable, supportive and long-lasting.



Call 800-864-2991 or visit BEVCO.com to select your chair today!

©2016 Bevco Precision Manufacturing, Inc. All rights reserved.



The Leading Choice of Private Universities



anti-bacterial



easy-to-clean



comfortable



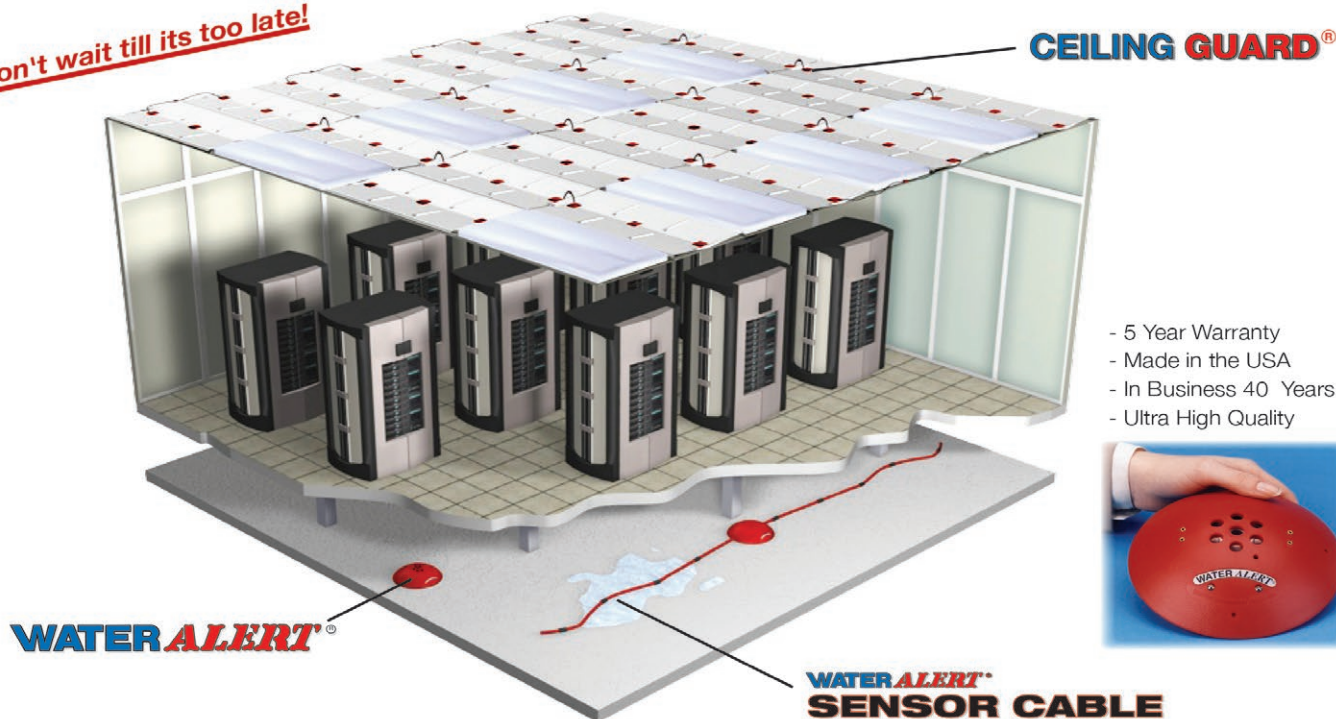
durable

Call 800-864-2991
or visit BEVCO.com
to select your chair today!



EARLY WARNING WATER LEAK DETECTION Dorlen Products Inc.

Don't wait till its too late!



- 5 Year Warranty
- Made in the USA
- In Business 40 Years
- Ultra High Quality

WWW.WATERALERT.COM

Installed in over 23,000 sites!

1-800-533-6392



OIL ALERT[®] LIQUID LEAK DETECTOR

DETECT OIL LEAKS AND SPILLS...FAST!

- AVOID OPERATIONS SHUT-DOWN
- REDUCE ENVIRONMENTAL RISKS
- MINIMIZE COSTLY CLEAN-UP
- MONITOR OFF-SITE EQUIPMENT

A small amount of oil (1/32 inch) seeping under Oil Alert activates it's loud "on/off" alarm and/or relay contact output. The low profile dome shaped unit guards against undetected leakage in areas of oil lubricated / hydraulic equipment, stand-by generators, pressurized piping and fuel oil storage locations...

5 year Limited Warranty

DORLEN Products Inc.
6615 W. Layton Ave. Milwaukee, WI. 53220

Go to WWW.OIL-ALERT.COM
OR CALL: 1-800-533-6392
FOR MORE INFO!!



Air Filtration: Your next Energy Conservation Measure?

The Dynamic V8 Air Cleaning System offers sustainable MERV15 performance for better IAQ, using 2/3 less fan energy than MERV14 filters and removing odors, VOCs and ultrafine particles without Ozone. The Dynamic V8 also offers average maintenance intervals exceeding four (4) years.



The Dynamic V8 can cut fan energy costs in half. And additional substantial savings may be available through reduction of ventilation air requirements using the IAQ Procedure in ASHRAE Standard 62. The IAQ Procedure allows recirculated indoor air to be cleaned rather than supplemented

with outdoor air that requires heating or cooling. Schools can achieve higher rates of air filtration with much lower pressure drop, allowing HVAC systems to operate at lower brake horsepower than comparable conventional air filtration systems.

Visit DynamicAQS.com or ask us about a free Life Cycle Cost Analysis to find out how much you can save on fan energy and maintenance costs.



AIR CLEANING SYSTEM

dynamic
Air Quality Solutions

The Science of Clean Air™

www.DynamicAQS.com



Challenge:

Incorporating innovative, state-of-the-art sustainable technologies to optimize comfort and indoor environmental quality while keeping long-term operating costs to a minimum.

Worcester Polytechnic Institute Sports & Recreation Center

This award-winning facility has been credited as being one of the greenest sports centers in the nation.

WPI Sports & Recreation Center is an environmentally friendly facility containing a 38-meter pool, a fitness center, a four-court gymnasium, an indoor running track, rowing tanks, racquetball and squash courts, dance studios, and offices and meeting spaces for the coaches and staff. The center is home to the wrestling team as well as the practice facility for men's and women's rowing and varsity team training.

Sustainability is important to WPI which boasts several LEED certified facilities on campus. The school has a broad reaching sustainability planning process which includes students as well as faculty. Faculty members have incorporated sustainability into many student projects and focused on various aspects of sustainability around the world. In 2012 alone, some fifty-one energy-related projects were completed at the school.



dynamic
Air Quality Solutions

The Science of Clean Air™

www.DynamicAQS.com

ORDER NOW FOR SUMMER/FALL GYM & SPORTS FIELD UPGRADES!

NFHS

PARTNER

MADE IN AMERICA

TEAM SPORTS AND PARK & REC EQUIPMENT

Volleyball
Football
Lacrosse
Futsal
Soccer

2021-22

Bison

800-247-7668
WWW.BISONINC.COM

Building or renovating a gymnasium?



by Bison

Contact IPI by Bison at 800-637-7968 for custom ceiling and wall mounted basketball backstops, divider curtains, wall padding and gym accessories. IPI projects include quality Bison sports equipment!



REQUEST A QUOTE



THE EXCLUSIVE NFHS PARTNER FOR THE SPORT OF BASKETBALL

MANUFACTURING AMERICA'S FINEST PARK EQUIPMENT SINCE 1954

From speedy bleachers to picnic tables to bike racks and more



Kay Park Recreation

It Pays to Buy Kay's - "America's Finest" Since 1954

1-800-553-2476

www.kaypark.com

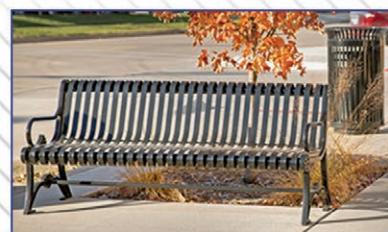


KAY PARK RECREATION

MAKING PLACES PEOPLE FRIENDLY • SINCE 1954



Tables, Benches, Bleachers, Dog Park Equipment, Litter Receptacles, Grills, Bike Racks, Fountains, Pedal Boats, Planters, NuCanoe, Highway Towable Bleachers & Stages



Over 65 Years



1-800-553-2476

www.kaypark.com

PROTECTING PEOPLE SINCE 1925

We have protection down to a science.

Our business is protecting people. Nothing matters more. That's why we make a science out of the testing process. Take our Protector® XStream® Fume Hood. We challenged it to contain far below the industry standard of 60 fpm face velocity. And we'll share the independent test results with you. How refreshing. labconco.com


LABCONCO®

PROTECTING PEOPLE SINCE 1925

Your research changes. Can your BSC?

The lab of the future is quick to adapt to changing needs. The right BSC will allow you to duct when chemical protection is needed. Switch back when not. The Axiom's future-friendly capabilities are so unique, they set a whole new standard. Say hello to possible at labconco.com/axiom


LABCONCO®



Super SAM[®] 125

Whether you're in an apartment, dormitory, hotel, multi-level building, media room or a classroom, peace and quiet is possible.

Super SAM 125 sound abatement membrane ensures you won't have to hear it to believe it!



www.nacproducts.com • 800-633-4622

waterproofing

Strataflex[®] is a thin, peel and stick sheet membrane is designed for use on interior or exterior floor surfaces that require waterproof protection for tile, stone, and other hard surface flooring installations. Strataflex may be installed over a variety of substrates including concrete and wood, and helps reduce installation time, since the finished flooring may be installed as soon as the membrane is applied. A unique feature of the Strataflex membrane is the 2" double stick lap joint that creates a water-tight seal, instead of the traditional butt-joint installation for other sheet membranes.

The versatile membrane functions as a moisture barrier, providing protection from Moisture Vapor Transmission (MVT) for up to 10#/1000 SQ FT/24 HRS, when installed with NAC TAC primer and will also provide crack isolation protection for up to 3/8" of lateral substrate movement.

The Strataflex membrane contains NO VOCs and is certified Clean Air GOLD, conforming to the California Department of Public Health Standard Method v1.2 for private office, school classrooms and single-family residence.

Strataflex is the ultimate solution for applications that require waterproofing protection such as apartments, condominiums, hotels, restaurants, malls, high-rise office buildings, bathrooms, kitchens and any commercial or residential installations requiring waterproof protection. For more information about NAC Products and our floor protection systems for crack isolation, sound control and waterproofing, visit www.nacproducts.com.



www.nacproducts.com • 800-633-4622



Measuring Moisture is our Expertise. Accuracy and Reliability is our Strength.



Lignomat Moisture Measurement
PO 30145, Portland OR 97230
Ph: 800-227-2105 FAX 503-256-3844

Email: sales@lignomat.com
www.lignomat.com

Moisture Intrusion is the number one concern
keeping buildings structural safe and healthy.

We offer measuring and monitoring devices
to find problems and monitor repairs.

Call 800-227-2105 for a recommendation.

*Handheld meters for
wood, drywall, concrete.
We offer a wide selection.*



*Monitor moisture
and humidity.
For short and long-term monitoring.*



*Report measurements
over the Internet.*

*For all remote applications.
and Building Surveillance.*



All-in-one Moisture Measuring Tool Kit

Our Recommendation

Ligno-VersaTec: All-in-one:

Pin - Pinless - RH

Anyone needing a versatile, accurate moisture meter will appreciate the multi-function Ligno-VersaTec and its absolute reliability for many years of usage.

With the Ligno-VersaTec, you can select the right measuring mode and the right accessories for the job on hand. This could be tracking moisture problems with the pin electrode or measuring humidity in a crawl space with the precision RH Bluepeg probe. Cupped Floors could be checked using the pinless mode. Pinless search and compare mode could be used for tracking moisture problems after water damage.



From Lignomat

A trusted name
in the industry.

Reusable, removable
Concrete Probes



Dual-depth Pinless Meter
for Wood and Concrete

Selection of Pin Probes

Call 800-227-2105 for a recommendation.
www.Ligno-VersaTec.com www.lignomat.com

\$80 Million Library is High Point University's Next Step

(HIGH POINT, N.C., Feb. 16, 2021) — As High Point University's transformational growth plan continues, HPU announces construction plans for a new \$80 million library that will provide ample study space for students and house a new Admissions Center.

The facility is expected to be completed in 2024, which will be HPU's 100th anniversary.

The four-story facility will provide 160,000 square feet of textbooks, digital databases, private study space, and an art gallery featuring historical artifacts and displays of HPU's expanding collection of artwork provided through the generosity of donors. It will feature the Library of Congress Classification System and become the main library on campus, supplemented by several existing satellite libraries.

The Admissions Center will be housed in the facility to welcome the thousands of prospective students and their families who visit HPU throughout the year for campus visits, admissions events, and scholarship interviews.



This new facility is part of HPU's next \$1 billion, 10-year growth plan that HPU President Nido Qubein announced in September 2019, which includes \$300 million in new construction and \$700 million in scholarships focused on first generation students, diversity, academic excellence, and veterans. It will be housed beside Hayworth Park and supported by institutional surpluses. "HPU's enrollment has grown tremendously since we began transforming our campus in 2005," says HPU President Dr. Nido Qubein. "Even during the pandemic, we welcomed our largest total enrollment and largest graduate student enrollment in university history. Students and families are increasingly attracted to our stellar academic programs and commitment to student success. Our future remains bright, and we continue marching onward and upward with faithful courage." A new Welcome Center at Panther Drive and additional development along this portion of campus is taking place in conjunction with the Nido and Mariana Qubein Arena and Conference Center and the adjoining Kahn Hotel. The development in this part of campus will provide a welcoming thoroughfare for visitors to the arena, conference center, hotel, and admissions center.



Hawai'i Pacific University eyes record first-time student enrollment; positive pandemic management seen as one factor

(HONOLULU, HI) — High school seniors across the U.S. are setting their sights on college in Hawai'i—specifically Hawai'i Pacific University—at a record-setting pace, even as nationwide college enrollment is notably declining this year compared with 2020.

Hawai'i Pacific today announced that its new-student commitments to attend this coming fall have jumped a whopping 71 percent over last year. This benchmark stands in sharp contrast to last week's report from the National Student Clearinghouse indicating that enrollment on campuses across the country is down an average six percent this spring compared with last year.

HPU President John Gotanda credits the growth in Honolulu to factors like the strength of academic programs, a wide variety of hands-on learning opportunities, the ability to study among the cultural diversity and beauty of the Pacific crossroads, and also the way the state and the university have made it through the COVID-19 pandemic.

"Across the nation so many universities struggled with online classes, campus COVID-19 outbreaks, and compliance with protocols," Gotanda noted. "Hawai'i Pacific University is about to cross the finish line of a year where we were able to offer in-person, hybrid, and online classes and activities on our successfully modified and socially distanced urban campus. Our infection rate remained among the lowest in the U.S. there were no spreader-events or clusters on campus all year, no cases of an infection occurring from a student to faculty member or among students in a classroom setting, and no cases among residential students since January," he added.

This year, Hawai'i has been among the very safest states in the country, with low per-capita COVID rates. Hawai'i Pacific University stayed open throughout this academic year, with only a few weeks of all-online instruction due to brief state and city mandates.

"Our students made it very clear last spring that they wanted this year to be in-person, so we prepared our midsize campus with all the right protocols and rigorous testing, tracing and quarantine programs," Gotanda said.

Hawai'i Pacific will continue to admit qualified students throughout this summer and—to prepare for its new-student boom—the university is expanding its dorm space by leasing several floors of a hotel on Waikiki Beach. Twenty-four hour university staffing, a meal plan, campus shuttle, and regular planned activities will all be added to the special housing experience.



HOPE'S®

For more than a century, Hope's has handcrafted the world's finest steel and bronze windows and doors, and we continue to refine the art that makes them the most sought-after and longest lasting windows and doors available. Hope's exclusive hot-rolled steel and solid bronze profiles replicate the traditional aesthetic of historic buildings while providing modern performance and efficiency. Hope's windows and doors are built to last a lifetime and beyond – sustaining their beauty and performance for generations. **HopesWindows.com**

HOPE'S WINDOWS, INC. — EST. 1912 — JAMESTOWN, NEW YORK

FERTITTA HALL, UNIVERSITY OF SOUTHERN CALIFORNIA
PRODUCTS SHOWN: Empire Bronze 5000™ Series bronze doors and window

PHOTOGRAPHER: Randy Howard Photos
ARCHITECT: AC Martin Partners, Inc.



PO Box 1903
Pelham, AL 35124

PRSRD STD
US POSTAGE
PAID
PERMIT 284
MIDLAND MI

Take-It-Anywhere Technology™

SOCIAL DISTANCING

DISPENSING LAPTOPS, TABLETS, CHARGERS AND MORE



OVER 3 MILLION

ANNUAL CHECKOUTS AND GROWING

3,000,000

Join The Self-Service Revolution

Self-Service Kiosks with auto-docking allow you and your facility to maximize overall space and streamline operations to accommodate greater user demand.

Call today to discuss options and possibilities.

877.836.3727

*Trusted Technology Branded
To Your Local Look-n-Feel*

Finally You Can Dispense Laptops, Tablets and Portable
Chargers To Students Anywhere With **No Staff** Involvement!

For More Info Go To: LaptopsAnytime.com



LAPTOPSANYTIME™
Automated Checkout Kiosks