





SHOWCASE OF EXCELLENCE

Our readers requested from us a special annual feature to highlight providers that provide quality products and services for private colleges and universities. This "Showcase of Excellence" appears each year in our June issue. This special section is filled with full and half page ads, offering both case studies and product showcases for service and product providers exclusive to the higher education market.

As you look through these pages, you will find more in-depth information on these quality providers, their products, and demonstrative case studies that can help you in your mission of providing a quality experience across your higher education facilities. And just as you may face the challenge of not having enough time to communicate every aspect of your higher learning meccas with your students and communities, we were limited by available space in this issue, so could not include every single one of the companies that we know can help you. Our hope, however, is that you will enjoy the information that space allowed us to include.

Enjoy the "Showcase of Excellence," and may you continue to be successful in providing quality facilities and experiences to the many lives your colleges and universities touch.

PROTECT THE SYSTEMS THAT PROTECT

COLLECTANDRAIN®

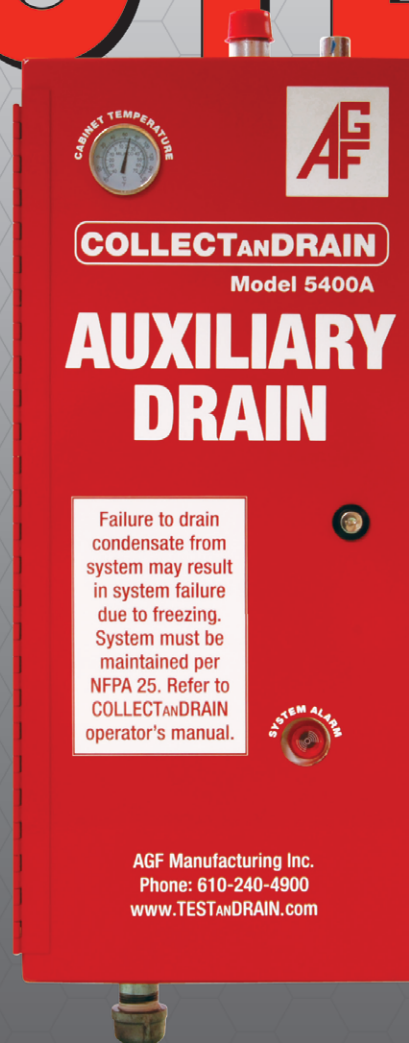
M5400

Fire sprinkler systems protect life and property, the COLLECTANDRAIN® M5400 protects dry fire sprinkler systems. Auxiliary drains that freeze and break are the main cause of fire sprinkler failures in winter months. Stop replacing auxiliary drains that freeze and break with auxiliary drains that freeze and break.

Less than half an ounce of water can break valves on auxiliary drains. This may result in false activation and system failure. The COLLECTANDRAIN®

Model 5400 provides a temperature controlled environment for problematic auxiliary drains. This increases their capacity to collect condensation in

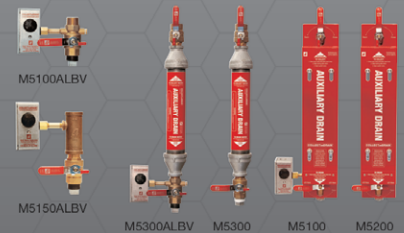
colder temperatures and helps prevent unnecessary freeze-ups. Don't wait until auxiliary drains break, install the M5400.



AGF Manufacturing Inc.
Phone: 610-240-4900
www.TESTANDRAIN.com



For other solutions visit our website



www.collectandrain.com

Part of Utah State's Maverik Stadium Renovation

The AGF COLLECT_{AND}DRAIN® M5400 Protects Maverik Stadium's Fire Sprinkler Systems from Freeze-Ups



of the Maverik Stadium Renovation. The M5400 goes beyond our patented prevention features that protect fire sprinkler systems from being tripped by improper maintenance or vandalism. The M5400 provides a temperature-controlled environment that deters system failures caused by freezing condensation in dry pipe system auxiliary drains. The heated and insulated cabinet contains an auxiliary drain with a float switch to monitor condensation levels. When condensation reaches a level where maintenance is needed, the float switch activates an audible alarm and LED warning light, making freeze-ups a thing of the past. It also features fire control panel notification capabilities.

Dry Fire Sprinkler System Auxiliary Drains can cost \$5,000 to \$10,000 or more every time they fail. Every year, building owners spend thousands of dollars from their operating budget replacing auxiliary drains that collect water, freeze, and break.

John Blankman, President of Paradise Fire Protection, learned about AGF and the M5400 at an American Fire Sprinkler Association Trade Show in Phoenix. Frustrated with standard auxiliary drains that freeze and break, John was looking for a more reliable product that would prevent freezing. John was impressed with the M5400's heated cabinet, and stated, "The 5400 would ensure that they did not have failures at the new stadium."

USU's Maverik Stadium Redevelopment Project includes a newly built press box, 24 luxury suites, 20 loge box suites, 700 club seats, a student-athlete training area, and state-of-the-art media, technology, and operations upgrades. The project also significantly boosted the number of public restrooms and upgraded concessions.

"Part of Utah States Maverik Stadium Renovation" FPC Magazine, Sept. 2016

Visit www.agfmfg.com for more information on the M5400 and to learn about AGF's other product lines.

Utah State University, located in the Northern Utah Mountains, is known for its top-notch academics and research, and nationally recognized for its athletics. In August 2016, Utah State's Division 1 Aggies returned to their newly renovated and renamed football stadium for the start of the 2016 season.

While fans, students, staff, and public celebrate the premium enhancements and state-of-the-art upgrades, they will also appreciate the safety improvements most people never see or notice, but are critical to ensure the safety and protection of both lives and property.

AGF Manufacturing is proud to announce that our COLLECT_{AND}DRAIN M5400 Auxiliary Drains are part

BUILT TO LAST



CLEARSPAN STRUCTURES

Every program and facility is looking to instill greatness in their athletes. ClearSpan has been helping programs and businesses of all sizes do just this for over 40 years by creating custom athletics building solutions. ClearSpan's fabric structures allow facilities to keep their athletes training year-round, regardless of weather, and offer several benefits when compared to traditional structures. Facilities that integrate a ClearSpan fabric building can expect superior versatility, ideal sporting environments and maximum strength and durability.



THE CLEARSPAN ATHLETICS ADVANTAGE INCLUDES:

RELIABLE COVERAGE – Play, train and compete in any weather

EXPANSIVE SPACES – Build to nearly any size

ABUNDANT NATURAL LIGHTING – Soft on the eyes and reduces utilities

VERSATILE BUILDINGS – Fabric, metal and hybrid cladding available

CLEAR SPAN INTERIORS – No obstructive posts to hinder play

ULTIMATE DEPENDABILITY – Industry-leading warranties

IN-HOUSE FINANCING – Start your next project today

ONE-STOP SHOPPING – Outfit buildings with everything you need

ClearSpan's fabric buildings are also designed and constructed to last, and feature industry-leading warranties to go along with it. The structures' frames are made from triple-galvanized steel that is corrosion resistant, and is backed by a 50-year warranty. ClearSpan offer multiple fabric cover options. These covers feature rip-stop weaves that stop any potential tears in their tracks, and they come in a range of warranties from 20 to 30 years, ensuring these structures last decades into the future.

**FOR MORE INFORMATION, VISIT
WWW.CLEARSPAN.COM OR CALL 866.643.1010**

LET'S BUILD

YOUR IDEAL STRUCTURE



SUPERIOR
BUILDING
SOLUTIONS
FOR OVER
40 YEARS

INDUSTRY-LEADING WARRANTIES

ClearSpan structures are built to last decades into the future.

ENERGY-EFFICIENT DESIGNS

Save money on a monthly basis and maximize profitability.

EXPERT CONSULTATION

Industry experts are on staff to provide invaluable advice.

METAL AND FABRIC BUILDINGS

Building solutions for any application in any industry.



www.clearspan.com
1.866.643.1010

ON-DEMAND TECHNOLOGY FOR ON-THE-GO STUDENTS

Self-Service DISPENSING KIOSKS

- **Space-Saving**
- **Experience-Enhancing**
- **Forever-Flexibility**

Break Down Barriers and Join 100+ Campuses In Making LaptopsAnytime Automated Dispensing Kiosks Your Go-To Self-Service Solution for On-the-Go Students.

Dispense Wide Range of Dell, HP, Lenovo & Apple Laptops and 110V Portable Power Chargers and Accessories.

Build Your Own Kiosks **Mixing-N-Matching** Laptops, Tablets And Now **110V Portable Power Outlets** Separated By Row Module.



OVER 2.5 MILLION
ANNUAL CHECKOUTS AND GROWING

2,500,000

Trusted Technology Branded to Your Local Look-n-Feel

 **LAPTOPSANYTIME**[™]
Automated Checkout Kiosks

1-877-836-3727 • LaptopsAnytime.com

Long Term Checkout

Dispense Power Cords, Laptop Bags And Accessories In Addition To The Laptop Itself. Now You Can Accommodate Extended Checkouts.

The Perfect Solution To Short Term and/or Long Term Checkouts.



New

Imagine 12-60+ More Outlets
In Your Facility
Portable 110V = Max Flexibility



Finally You Can Set Up A Self-Service Program To Dispense
Powerful, Portable 110V Power Chargers.

1 charger can power up to
3 devices at once



Trusted Technology Branded to Your Local Look-n-Feel

LAPTOPSANYTIME[™]
Automated Checkout Kiosks

1-877-836-3727 • LaptopsAnytime.com

SUPERIOR[®]

AMERICA'S MOST COMPLETE LOCKER LINE[®]

**Recruit Like A Champion
Demand Superior[®] Recruiter Lockers**

**NEW
RECRUITER**
WOOD SPORT LOCKER
2

RECRUITER

SUPERIOR Wood Sport Lockers[™]



800-776-1342

✉ info@ListIndustries.com

🌐 ListIndustries.com



Game Ready

All-new for 2021, List Industries Inc.® is introducing its New Recruiter2™ Wood Sport Locker Quick-Ship Design lockers with modern contour edges and many included features.

Available in 24" Wide x 24" Depth x 84" Height and 30" Wide x 24" Depth x 84" Height, they can be ready to install in as little as two weeks.

Reinforce your commitment to your players and imagine the powerful impact a modern, luxurious and efficient locker room will have on your ability to recruit the best players to your program. List Industries has re-engineered the New Recruiter2™ Wood Sport Locker with sleek Quick-Ship Design. Their lockers bring an upscale and luxurious design to your locker room with a very reasonable life-cycle cost. They use the finest furniture-grade plywood to keep them looking like new year-in and year-out. Each locker is handcrafted by expert craftsmen using state-of-the-art equipment. The Recruiter2 locker is shipped fully assembled and ready to install upon delivery. Custom accessories are available to add to the player's enjoyment of their locker. The company's experts will help you throughout the entire process — from initial design to project completion.

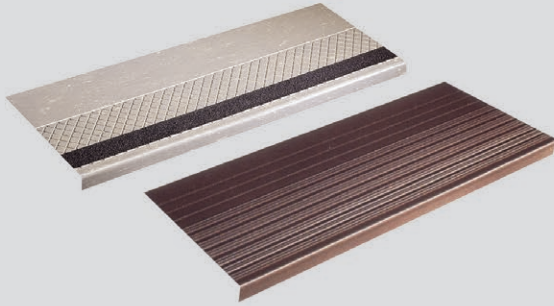
List Industries has earned its slogan as America's Most Complete Locker Line by offering the largest selection of locker styles, materials, sizes, colors and functionality all while maintaining high standards of quality, customer service, packaging, and on-time delivery. They offer metal, wood, phenolic and plastic lockers; designed to serve the locker needs of any facility from health and sports clubs to schools and universities to professional sports arenas and stadiums.

For more information on List Industries Inc.® visit listindustries.com or call 800-776-1342.



ONE SOURCE FOR ALL YOUR FLOORING NEEDS

Rubber & Vinyl Stair Treads for Interior Applications



Sheet Rubber



Entrance Matting



Rubber Stair Treads for Exterior Applications



40 Mil LVT



For more information
visit our website at
www.mussonrubber.com
or email us at
info@mussonrubber.com



MUSSON RUBBER CO.

P.O. Box 7038 • Akron, Ohio 44306
800-321-2381 • Fax 330-773-3254
www.mussonrubber.com



Since 1945, Musson Rubber has been a pioneer and leader in the development, manufacture and distribution of safety stair coverings and flooring materials. Musson Rubber specializes in stair coverings and entrance matting for commercial, institutional and industrial use. Our website contains the most complete and comprehensive line of top quality rubber and vinyl stair coverings and entrance mats for use in public buildings. We have been involved in general production, maintenance, MRO applications, and we have been working with our customers and suppliers throughout the region for over 70 years. **Musson Rubber is your source when you need reputable products from top suppliers and trusted service.**



MAKE STAIRS & LANDING SAFE WITH MUSSON VINYL TREADS & TILE

- Excellent for commercial, industrial, and institutional use
- Vinyl treads are available in four colors and a variety of sizes and styles
- Contrasting 18"x18" vinyl tiles have a durable 40 mil wear layer
- Matching cove risers are also available.



RUBBER SPORT FLOOR

- Durable spike resistant flooring
- Made of recycled rubber combined with color flecks of new rubber
- Available in roll goods, blue down, or interlocking tiles in a variety of colors

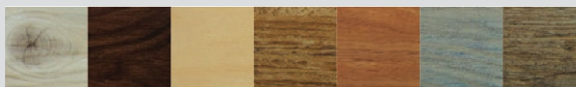


RECYCLED ENTRANCE MATTING

- Made of recycled PVC plastic
- Brushes off sand, dirt, and slush from shoes and carts
- Open grid drains away water and debris
- Snap together tiles are easy to install and replace
- Use in recessed areas or surface with beveled edges

LVT TILE WITH 40 MIL WEAR LAYER

The extra-thick helps to combine the beauty and feel of antique wood with the durability required for high-traffic applications. These planks are easy to maintain; there are no waxes, sealers, or other finishes required which reduces labor and chemical costs. Available in 7 seasoned wood patterns.



MUSSON RUBBER CO.

P.O. Box 7038 • Akron, Ohio 44306
 800-321-2381 • Fax 330-773-3254
info@mussonrubber.com • www.mussonrubber.com

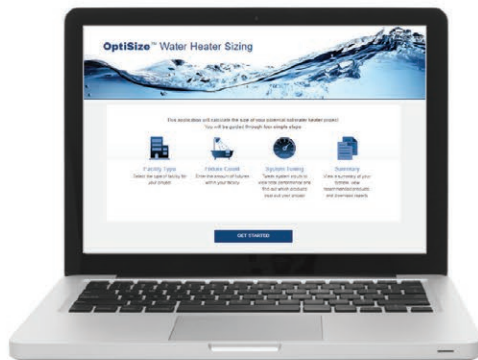
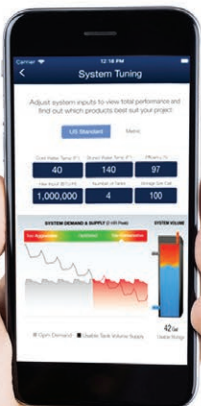


Power. Performance. Endurance.

Dynamic[®] Water Heating

PVI's Dynamic Water Heating[®]

A revolutionary water heating system design and application approach that features greater BTU input for quick reaction, an optimized storage buffer for extra power when needed, the benefit of high water turnover, and exclusive duplex stainless steel AquaPLEX[®] construction for unmatched performance and longevity. Learn more about PVI's Dynamic Water Heaters at pvi.com.



OptiSize[®] will help you select an optimally-sized water heater for your next project



800.784.8326 | pvi.com

©2021 PVI

PVI's Dynamic Water Heating Solutions for Today's Facility Designs

PVI® is addressing water heating needs in retrofit and new construction through Dynamic Water Heating™, a revolutionary water heating system design and application approach that integrates innovative products with advanced technology to create customer-friendly solutions. Dynamic Water Heating helps design solutions with greater BTU input for quick reaction, optimized storage buffer for extra power when needed, high water turnover, and unmatched performance and longevity.

Dynamic Water Heating



With Dynamic Water Heating, the right-sized commercial ASME water heaters that balance BTU input and storage can be selected more efficiently. Available in numerous energy sources, including gas, electric, steam, boiler water, and oil, PVI's Dynamic Water Heating solutions feature energy inputs from 199 MBH – 7000 MBH and range from instantaneous on-demand water heating to storage-type heaters.

Optimize Water Heater Size

PVI's Dynamic Water Heating solutions also incorporate OptiSize®, an online and app-based tool that helps select the optimally-sized water heater for any project. It calculates the size of the hot water heater project based on facility type and fixture count, as well as provides system tuning capability for better performance.

High Reliability Via AquaPLEX

Fabricated from corrosion-resistant AquaPLEX duplex stainless steel, PVI long-lasting water heaters are extremely durable, require no linings or anodes, and include the best warranties in the industry. AquaPLEX blends 300 and 400 series stainless steel to create an extremely strong material that is highly resistant to aqueous corrosion in potable water at any temperature, as well as chloride stress corrosion cracking.



800.784.8326 | pvi.com

Engineered Water Heating Solutions®



Tackle your learning challenges with **SMARTDESKS**

Social Distancing



Classrooms



Multi-Media Podiums



Sit Stand Desks



Create your own collaborative learning environment with SMARTdesks.

Our comprehensive services for classroom layouts, custom furniture, and technology integration are here to support your organization's mission of learning, no matter the challenges we face.

SMARTDESKS

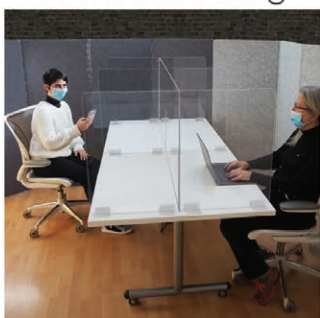
Work Intelligentlysm

800 770 7042 | www.smartdesks.com



Make hybrid learning easy with **SMARTDESKS®**

Social Distancing



Classrooms



Multi-Media Podiums



Sit Stand Desks



Create your own hybrid learning environment with SMARTdesks.

Our comprehensive services for classroom layouts, custom furniture, and technology integration are here to support your organization's mission of learning, no matter the challenges we face.

SMARTDESKS®
where design meets technologysm

800 770 7042 | www.smartdesks.com

We're Still Listening.

Water professionals know that swimmers demand clear and clean water. That's why we continue to work hard to make your job easier. Make chlorination easy with the **ACF Series** Calcium Hypochlorite Feeders.

Clarify with Vantage Poly-A Clarifying Tablets. This unique and powerful tablet water clarifier is not just to clear up cloudy water after a long weekend. As a maintenance product, it works with your filtration system to remove organic and inorganic compounds to prevent dull and cloudy water.

SANITIZE with the **ACF Series** Calcium Hypochlorite Tablet Feeders

- ⌘ Safer than liquid systems
- ⌘ Runs "Clean" - Less Maintenance!
- ⌘ Simple, Efficient, and Durable
- ⌘ Systems available for ANY size pool
- ⌘ NSF/ANSI Standard 50 Certified

CLARIFY with the **VPE-20** Poly-A Tablet Feeder

- ⌘ Unique tablet clarifier
- ⌘ Easier than liquid systems
- ⌘ Removes organic and inorganic compounds
- ⌘ Increases filter effectiveness
- ⌘ Proven cryptosporidium removal



AllChem Performance Products, Inc.
Phone: 352.378.9696
FAX: 866.343.1216
email: vantage@allchem.com
www.vantagewatercare.com

VANTAGE®

Copyright 2015
VANTAGE is a registered trademark of
AllChem Performance Products, Inc.

Beautiful Pool Water has never been this easy...



..until now.

Introducing the **VANTAGE[®]** **ACF Series** Calcium Hypochlorite Tablet Feeders

- ⌘ Unmatched water quality
- ⌘ Safer than liquid systems
- ⌘ Runs "Clean" - Less Maintenance!
- ⌘ Simple, Efficient, and Durable
- ⌘ Systems available for ANY size pool
- ⌘ NSF/ANSI Standard 50 Certified
- ⌘ Uses VANTAGE Calcium Hypochlorite Tablets
- ⌘ Majority of Parts are Interchangeable

Thanks in no small part to your input, our introductory ACF-60 model feeder received excellent reviews from the field. So good, in fact, that facility managers and operators, builders, and designers requested the same simplicity of design, reliability and ease of operation in both smaller and larger capacity feeders. Again we listened, and the result is the ACF-18 for commercial systems under 50,000 gallons, and the ACF-250 for systems up to 1,000,000 gallons of water. All three Vantage feeders are NSF/ANSI Standard 50 certified.

A complete line of chemicals, including our unique Poly-A Tablets is available.

VANTAGE[®]: We're Still Listening.

AllChem Performance Products, LP
6010 NW First Place
Gainesville, FL 32607
www.vantagewatercare.com

Phone: 352.378.9696
FAX: 352.333.7436
email: vantage@allchem.com



Copyright 2008
VANTAGE is a registered trademark of AllChem Performance Products, LP.

It takes a Viking to...

PROTECT YOUR ASSETS



**DON'T PUT YOUR
CAMPUS AT RISK**

We don't mess around when it comes to your greatest assets. You need it **secure and battle-tested**, day in and day out, year after year.

Viking Entry Systems and Emergency Phones are built to last. Available Enhanced Weather Protection will provide added defense for outdoor use.

Say goodbye to unreliability, and hello to rugged durability. **YOU NEED A VIKING.**



Start planning your installation today!

715.386.8861
vikingelectronics.com

VIKING

 **DESIGNED
MANUFACTURED
& SUPPORTED**

BATTLE-TESTED & WORRY FREE



When it comes to security and communication, strength matters. At Viking Electronics, we combine the industry-leading innovation of today with the tough-as-nails durability of the past.

Whether your system calls for analog or VoIP, multiple access points, or color video...

YOU NEED A VIKING.

Start planning your installation today!

715.386.8861
vikingelectronics.com

 **DESIGNED
MANUFACTURED
& SUPPORTED**

VIKING

C L E A R F O C U S I N N O V A T I O N S

Introducing Tech-i UVC

C L E A R F O C U S I N N O V A T I O N S

“Knight in Shining Armor”

We're making colleges & universities affordable environments to come back to, learn in, grow in, and be safe in.

Real Work Autonomous Robotics, "UVC Series" for Colleges & Universities

Safe and Efficient Ultra Violet-C Disinfecting Autonomous Robotics.

Designed to fight the spread of Covid-19 pathogens and other infectious diseases on high-touch surfaces.

Open classrooms safely and immediately. CFI eliminates the need for Cap Ex investment.

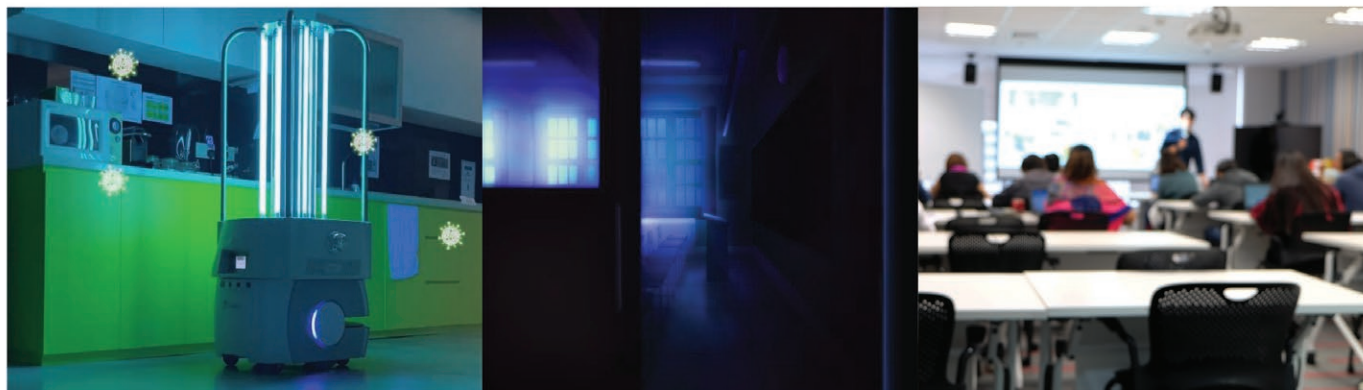
Learn more about our market-ready RaaS (Robotics as a Service) Op Ex product and maintenance agreement options for Education Clients.

A U T O N O M O U S / I N N O V A T I O N / I N T E R A C T I V E / I N S P I R A T I O N

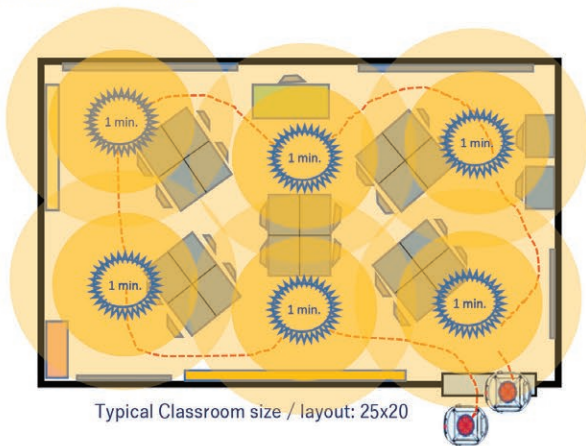
For Sales and More Information Contact CFI at 650.533.2979 . sales@clearfocusinnovations.net

CLEAR FOCUS INNOVATIONS

CFI Real Work Autonomous Robotics, "UVC Series"



UVC Disinfection	Full Coverage Autonomous Navigation	Easy Integration	Specifications	Safety	Important Notes On Effectiveness
<ul style="list-style-type: none"> Proven technology that destroys bacteria and viruses on high touch surfaces in high traffic areas in minutes. Specific doses of UVC (UVC Dose = UVC intensity x time) applied to pathogens break down DNA / RNA bonds. Pathogen no longer replicates or lingers. UVC energy has been shown to reduce pathogens by 99.9%. Quickly disinfect med. to large rooms including schools, universities healthcare environments, patient rooms, nursing and long-term care facilities, office spaces, elevators, gyms, spas, bathrooms, showers & other high touch areas. Techi-UVC operating at 10 feet & 360° takes less than 1 minute to inactivate coronavirus to 99.9%. MRSA in less than 10 minutes C.diff. in less than 16 minutes. 	<ul style="list-style-type: none"> Narrow corridor navigation - Designed to navigate through extremely narrow pathways and clearances. As narrow as 900mm (35.4 inch). Eight individually validated UVC lamps deliver balanced and uniform high-output UVC flux to disinfect pathogens from surfaces. Pre-programmed or manual disinfection cycle times. Schedule 24/7/365. UVC units will move between programmed and (high traffic) focus areas autonomously. Eliminating the need for any human intervention. Ideal for evening hours with no staff on premises. Some assistance may be required if doors need to be manually opened and closed. 	<ul style="list-style-type: none"> Seamless integration allows for minimal implementation time. Simple and intuitive user interface and controls. Short learning curve that allows for fast deployments with few staff and resources. One time set up / building mapping. Integrates with all automatic doors, elevator access, PABX, fire and safety systems. Self-Navigation Obstacle Avoidance. Full autonomous operation based on Techmetrics extensive and extremely reliable Mobile Robotics technology. 	<ul style="list-style-type: none"> On-board and remote user interface with interactive touch displays for easy set up, tracking and maintenance. 24V 60Ah battery operation. 3.5 hours of UVC operation @ 80% duty cycle. 4 hours recharge time 1.84 kWh nominal power usage. Home base docking for auto charging Rated Life: 13,000 hrs. Running hours at 25% duty cycle (6 years lamp life) High performance LIDAR & SICK Dual side Safety compliant and navigation lasers. 8 slim line UVC lamps & polished reflector for maximum intensity and 360° coverage. DIMS: 65.63in./ 1667mm H x 25.2in./ 640mm W x 28.62in. 727mm L. Weight: 114Kg. 	<ul style="list-style-type: none"> 100% Autonomous navigation with 4 safety lasers and emergency stop. 360° motion sensors that automatically shuts off the UV lamp when human interaction present. Formed stainless tube structure protects lamps. Laser driven obstacle detection & avoidance. Autonomously, safely and thoroughly sanitizes schools & campus facilities at night. Protects students, faculty & staff during the day. 	<ul style="list-style-type: none"> No warranty is offered, or responsibility taken in regards to the process or efficiency of the device as CFI has no control over the use of the device. CFI makes no claims to the actual log reduction of pathogens, as it can greatly vary depending on the environment. UVC is an adjunct cleaning method, and dirt, dust, and debris should be removed from surfaces before UVC treatment. Prolonged, direct exposure to UVC light can cause temporary skin redness and eye irritation, but does not cause skin cancer or cataracts. Techi-UVC devices are designed with safety in mind and, when used in accordance with the Operation and Maintenance Manual, do not allow exposure to UVC irradiation, and do allow for safe operation and maintenance.



UVC Exposure (mJ/cm ²) at Various Distances				
1 mJ/cm ² = 1000 μW-s/cm ²				
	UVC-on	Travel within room (typical) UVC-off	Travel to next room (typical) UVC-off	Rooms covered in 3.5 hrs. of UVC run time (typical)
25x20 average classroom size	6min.	3min.	3min.	35
Time / Radius	1min / 1 meter			
charge Time	4hrs			
Cycles in 12 hours	2			70
2 robots				140
3 robots				210

The above chart is offered as a reference point, does not account for objects physically blocking UV ray transmission or school geography. Multiple robots ideally require their own charging stations.

ClearFocus Innovations, American Ultra ClearFocus Innovations, American Ultraviolet and Techmetrics are individual companies providing products, services and support for Techmetrics Tech UVC Series products and solutions. violet and Techmetrics are individual companies providing products, services and support for Techmetrics Tech UVC Series products and solutions. American Ultraviolet is the leader in UV decontamination technology for over 60 years has manufactured more than 100,000 UVC germicidal fixtures that are safely operating in hospitals, schools and commercial environments around the world. Techmetrics Robotics, experts in Autonomous Mobile Robots (AMR) With superior in-house technology, smooth navigation and extended operating time. Techmetrics and CFI offer the broadest line of real work autonomous mobile robots available for a variety of markets including education, healthcare and hospitality. Data and specs may change without notice.



Final Assembly in the USA



Reseller Partners



Technology Partners



For More Information Contact CFI at
650.533.2979
sales@clearfocusinnovations.net

Indoor Air Quality

VISUALIZATION

beautifully

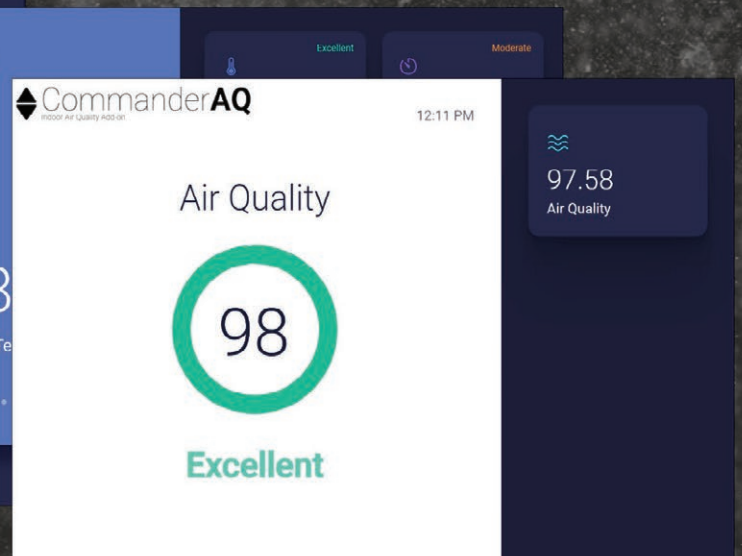
REIMAGINED



Detailed, personalized backend



Customizable public facing kiosk mode



Email Info@KMCControls.com for details



3 Ways IoT and Smart Building Automation Can Change Your Campus for the Better

Private universities have many unique challenges. Building automation is not least on the list.

Varying growth over time likely means there are several iterations and system types throughout campus. Competition has driven an increase of new, diverse types of managed spaces for students and staff. Stagnant endowments are driving a renewed focus on energy savings to steward available funds. No single solution solves these challenges, but rather a university needs to develop a holistic strategy. IoT and Smart Building Initiatives is a part of that strategy.

To solve these issues, you need a solid solution from a provider with expertise. KMC Controls has been a leading innovation vendor in the HVAC industry for over 50 years. With our Intel Market Ready Solution, KMC Commander, you are able to realize these benefits and build a holistic IoT strategy. Plus, we partner with industry leaders to bring the best overall edge-to-edge solution to our customers, from wireless sensors to analytics.

1 UNIFY YOUR BUILDING SYSTEMS

You have a lot of buildings on campus, each with their own HVAC or lighting platform (or no platform at all). When looking to develop and drive an IoT strategy, the first step is to bring all those systems into a single platform. No need to replace your systems, as the leading offerings on the market can use what's already there. Additionally, by using cloud-based solutions, make these systems more accessible than ever before.

2 DRIVE THE OPERATIONAL USE OF DATA

The most innovative solution providers in the space not only connect your systems. They also share that data with other industry-leading solutions. No one system can be all things to all people. That's why collaboration and interoperability is so important.

3 DEMOCRATIZE YOUR DATA INTO THE CURRICULUM

Nothing helps students understand new concepts more than real-world examples. For instance, use building data to teach math students in-depth regression analysis on CO2 and occupancy. Use the API to teach computer science students integration and app development. Use energy metrics to teach economics students regional utility analysis and cost-avoidance measures. The possibilities are endless.



Email Info@KMCControls.com for details

MEANGREEN™

M O W E R S

Commercial Electric ZTR
• All Day Battery Power •

Introducing the All-New

VANQUISH™

- Stand-on ZTR
- 52" or 60" cut
- Up to 7 hrs. per charge!



LOW NOISE

HALF the noise of
gas mowers



LOW MAINTENANCE

NO tune-ups needed



ZERO GAS

NO gas
(NO spills, NO mess)



ZERO EMISSIONS

NO fumes, NO pollutants



Making the case for Electric Mowers.

Commercial Grade. All Day Battery Power.

Not so long ago, you needed to be an environmentalist to make the case for battery-powered outdoor power equipment. Today you just need to use your business smarts and ask the right questions.

While it's natural to experience "sticker shock" if you are new to lithium ion power, once you have factored in the operational savings of switching from gas you may have a completely different view.

The BUSINESS CASE

Estimate of Operational Savings*



EVO

RIVAL

VANQUISH

WBX-33HD

	EVO	RIVAL	VANQUISH	WBX-33HD
Operational Savings*	\$12-15/hour	\$8-10/hour	\$8-10/hour	\$4-5/hour
Annual Savings	\$12,480 - \$15,600	\$8,320 - \$10,400	\$8,320 - \$10,400	\$4,160 - \$5,200
5-Year Savings	\$62K - 78K	\$41K - 52K	\$41K - 52K	\$20K -26K
10-Year Savings	\$124K - 156K	\$83 - 104K	\$83 - 104K	\$41K - 52K

*See our online calculator and make your own estimate: meangreenproducts.com/simple-savings-calculator

The PEACE OF MIND CASE

When you're expected to deliver top quality to your customer and top efficiency to your business, everything counts.

Reliability. Your equipment has to start, it has to run, it has to be easy to maintain, and it has to put in a full day's work, just like you. Any time that a mower spends in the shop—whether for routine maintenance like tuneups (there are *none* with Mean Green mowers) or major repairs—is time that it's not in the field. Electric mowers have fewer moving parts and that means less maintenance.

Efficiency. High ground speed (that doesn't sacrifice quality), reduced downtime (no refueling stops), and ease of operation all help you get the job done fast—so you can move on to the next one. Mean Green mowers, with speeds of up to 13 mph, are likely to leave your gas mowers in the dust! Plus, with their quiet operation, you can start residential jobs earlier in the morning (or finish them later in the day) without annoying your customers.

Employee Satisfaction. Keeping good help is never easy and most lawn service professionals experience more turnover than they would like. But when you take away the gas, the fumes, and the noise of typical gas mowers, and offer the comfort of an extraordinarily smooth ride, the work can be a pleasure.

THE FUTURE IS GREEN

Find a Dealer at:
meangreenproducts.com



★ USA
ENGINEERED AND BUILT

Assembled in the USA using domestic and foreign parts



SEATING THAT MAKES THE DIFFERENCE

BEVCO chairs provide flexible options that play an active role in keeping students engaged and empowered to learn. BEVCO's GreenGuard Gold certified chairs offer adaptable seating that is sustainable, supportive and long-lasting.



Call 800-864-2991 or visit BEVCO.com to select your chair today!

©2016 Bevco Precision Manufacturing, Inc. All rights reserved.



The Leading Choice of Private Universities

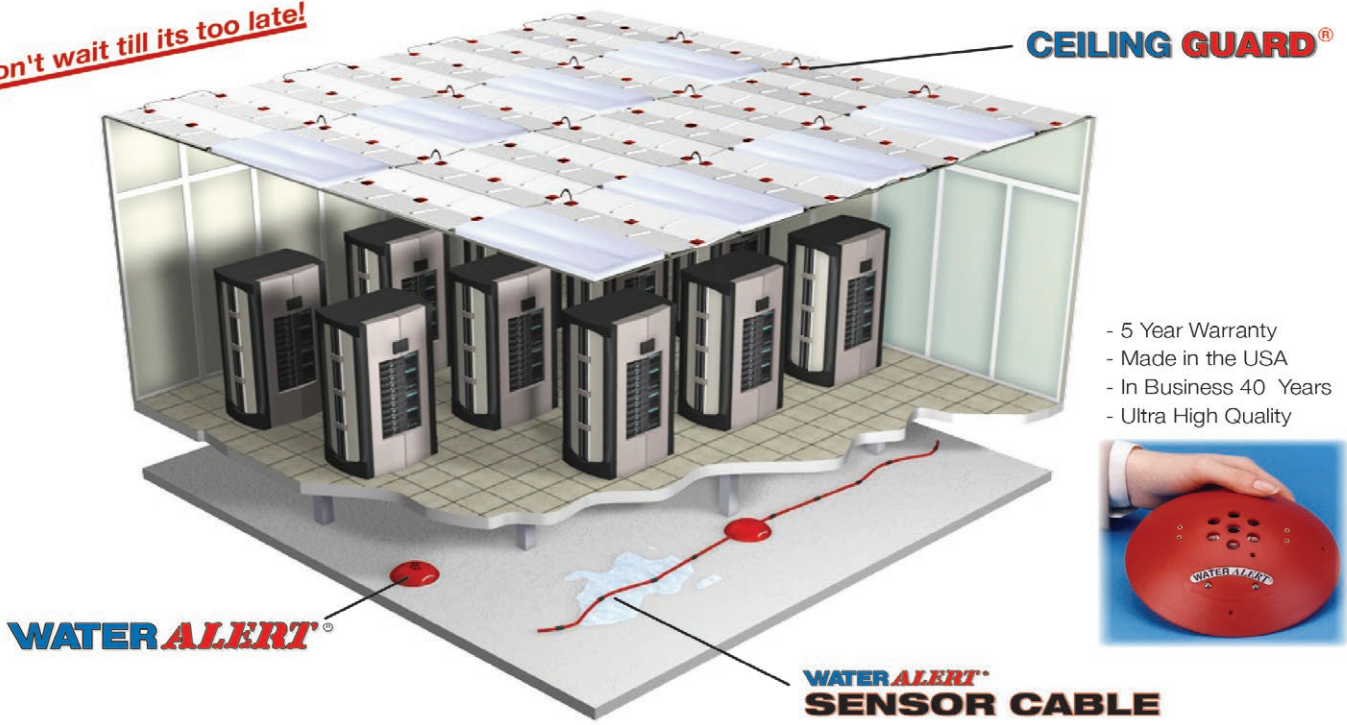
-  anti-bacterial
-  easy-to-clean
-  comfortable
-  durable

Call 800-864-2991 or visit BEVCO.com to select your chair today!



EARLY WARNING WATER LEAK DETECTION Dorlen Products Inc.

Don't wait till its too late!



- 5 Year Warranty
- Made in the USA
- In Business 40 Years
- Ultra High Quality



WWW.WATERALERT.COM Installed in over 23,000 sites! **1-800-533-6392**



OIL ALERT[®] LIQUID LEAK DETECTOR

DETECT OIL LEAKS AND SPILLS...FAST!

- AVOID OPERATIONS SHUT-DOWN
- REDUCE ENVIRONMENTAL RISKS
- MINIMIZE COSTLY CLEAN-UP
- MONITOR OFF-SITE EQUIPMENT

A small amount of oil (1/32 inch) seeping under Oil Alert activates it's loud "on/off" alarm and/or relay contact output. The low profile dome shaped unit guards against undetected leakage in areas of oil lubricated / hydraulic equipment, stand-by generators, pressurized piping and fuel oil storage locations...

5 year Limited Warranty

DORLEN Products Inc.
6615 W. Layton Ave. Milwaukee, WI. 53220

Go to WWW.OIL-ALERT.COM
OR CALL: 1-800-533-6392
FOR MORE INFO!!



Air Filtration: Your next Energy Conservation Measure?

The Dynamic V8 Air Cleaning System offers sustainable MERV15 performance for better IAQ, using 2/3 less fan energy than MERV14 filters and removing odors, VOCs and ultrafine particles without Ozone. The Dynamic V8 also offers average maintenance intervals exceeding four (4) years.



The Dynamic V8 can cut fan energy costs in half. And additional substantial savings may be available through reduction of ventilation air requirements using the IAQ Procedure in ASHRAE Standard 62. The IAQ Procedure allows recirculated indoor air to be cleaned rather than supplemented



with outdoor air that requires heating or cooling. Schools can achieve higher rates of air filtration with much lower pressure drop, allowing HVAC systems to operate at lower brake horsepower than comparable conventional air filtration systems.

Visit DynamicAQS.com or ask us about a free Life Cycle Cost Analysis to find out how much you can save on fan energy and maintenance costs.

dynamic
Air Quality Solutions
The Science of Clean Air.
www.DynamicAQS.com

Challenge:

Incorporating innovative, state-of-the-art sustainable technologies to optimize comfort and indoor environmental quality while keeping long-term operating costs to a minimum.

Worcester Polytechnic Institute Sports & Recreation Center

This award-winning facility has been credited as being one of the greenest sports centers in the nation.

WPI Sports & Recreation Center is an environmentally friendly facility containing a 38-meter pool, a fitness center, a four-court gymnasium, an indoor running track, rowing tanks, racquetball and squash courts, dance studios, and offices and meeting spaces for the coaches and staff. The center is home to the wrestling team as well as the practice facility for men's and women's rowing and varsity team training.

Sustainability is important to WPI which boasts several LEED certified facilities on campus. The school has a broad reaching sustainability planning process which includes students as well as faculty. Faculty members have incorporated sustainability into many student projects and focused on various aspects of sustainability around the world. In 2012 alone, some fifty-one energy-related projects were completed at the school.



dynamic
Air Quality Solutions
The Science of Clean Air.
www.DynamicAQS.com

ORDER NOW FOR SUMMER/FALL GYM & SPORTS FIELD UPGRADES!

NFHS
PARTNER

MADE IN AMERICA

TEAM SPORTS AND PARK & REC EQUIPMENT
Volleyball
Football
Baseball
Softball
Lacrosse
Futsal
Soccer
 2021-22
 Bison
 800-247-7668
 www.bisoninc.com

Bison®

800-247-7668
WWW.BISONINC.COM

Building or renovating a gymnasium?



Contact IPI by Bison at 800-637-7968 for custom ceiling and wall mounted basketball backstops, divider curtains, wall padding and gym accessories. IPI projects include quality Bison sports equipment!

by Bison



4specs.com
ARCAT
 BSD speclink e
 CAD details

REQUEST A QUOTE

FIBA
APPROVED EQUIPMENT

MADE IN AMERICA

Competition Basketball Portables

Ceiling & Wall Mounted Backstops

THE EXCLUSIVE NFHS PARTNER FOR THE SPORT OF BASKETBALL

MANUFACTURING AMERICA'S FINEST PARK EQUIPMENT SINCE 1954

From speedy bleachers to picnic tables to bike racks and more



Kay Park Recreation

It Pays to Buy Kay's - "America's Finest" Since 1954

1-800-553-2476
www.kaypark.com

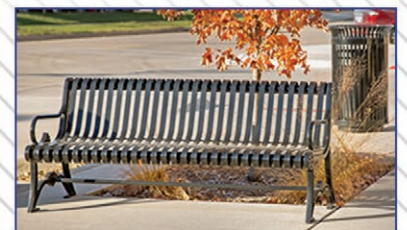


KAY PARK RECREATION

MAKING PLACES PEOPLE FRIENDLY • SINCE 1954



Tables, Benches, Bleachers, Dog Park Equipment, Litter Receptacles, Grills, Bike Racks, Fountains, Pedal Boats, Planters, NuCanoe, Highway Towable Bleachers & Stages



1-800-553-2476

Over 65 Years



www.kaypark.com

PROTECTING PEOPLE SINCE 1925

We have protection down to a science.

Our business is protecting people. Nothing matters more. That's why we make a science out of the testing process. Take our Protector® XStream® Fume Hood. We challenged it to contain far below the industry standard of 60 fpm face velocity. And we'll share the independent test results with you. How refreshing. labconco.com



LABCONCO

PROTECTING PEOPLE SINCE 1925

Your research changes. Can your BSC?

The lab of the future is quick to adapt to changing needs. The right BSC will allow you to duct when chemical protection is needed. Switch back when not. The Axiom's future-friendly capabilities are so unique, they set a whole new standard. Say hello to possible at labconco.com/axiom



LABCONCO



Super SAM[®] 125

Whether you're in an apartment, dormitory, hotel, multi-level building, media room or a classroom, peace and quiet is possible.

Super SAM 125 sound abatement membrane ensures you won't have to hear it to believe it!



www.nacproducts.com • 800-633-4622

waterproofing

Strataflex[®] is a thin, peel and stick sheet membrane is designed for use on interior or exterior floor surfaces that require waterproof protection for tile, stone, and other hard surface flooring installations. Strataflex may be installed over a variety of substrates including concrete and wood, and helps reduce installation time, since the finished flooring may be installed as soon as the membrane is applied. A unique feature of the Strataflex membrane is the 2" double stick lap joint that creates a water-tight seal, instead of the traditional butt-joint installation for other sheet membranes.

The versatile membrane functions as a moisture barrier, providing protection from Moisture Vapor Transmission (MVT) for up to 10#/1000 SQ FT/24 HRS, when installed with NAC TAC primer and will also provide crack isolation protection for up to 3/8" of lateral substrate movement.

The Strataflex membrane contains NO VOCs and is certified Clean Air GOLD, conforming to the California Department of Public Health Standard Method v1.2 for private office, school classrooms and single-family residence.

Strataflex is the ultimate solution for applications that require waterproofing protection such as apartments, condominiums, hotels, restaurants, malls, high-rise office buildings, bathrooms, kitchens and any commercial or residential installations requiring waterproof protection. For more information about NAC Products and our floor protection systems for crack isolation, sound control and waterproofing, visit www.nacproducts.com.



www.nacproducts.com • 800-633-4622



Measuring Moisture is our Expertise. Accuracy and Reliability is our Strength.



Lignomat Moisture Measurement
PO 30145, Portland OR 97230
Ph: 800-227-2105 FAX 503-256-3844

Email: sales@lignomat.com
www.lignomat.com

Moisture Intrusion is the number one concern keeping buildings structural safe and healthy.

We offer measuring and monitoring devices to find problems and monitor repairs.

Call 800-227-2105 for a recommendation.

Handheld meters for wood, drywall, concrete. We offer a wide selection.



Monitor moisture and humidity. For short and long-term monitoring.



Report measurements over the Internet. For all remote applications and Building Surveillance.



All-in-one Moisture Measuring Tool Kit

Our Recommendation

Ligno-VersaTec: All-in-one:

Pin - Pinless - RH

Anyone needing a versatile, accurate moisture meter will appreciate the multi-function Ligno-VersaTec and its absolute reliability for many years of usage.

With the Ligno-VersaTec, you can select the right measuring mode and the right accessories for the job on hand. This could be tracking moisture problems with the pin electrode or measuring humidity in a crawl space with the precision RH Bluepeg probe. Cupped Floors could be checked using the pinless mode. Pinless search and compare mode could be used for tracking moisture problems after water damage.



From Lignomat

A trusted name in the industry.

Reusable, removable Concrete Probes



Dual-depth Pinless Meter for Wood and Concrete

Selection of Pin Probes

Call 800-227-2105 for a recommendation.
www.Ligno-VersaTec.com www.lignomat.com