



Sure Footing

CARPET MATS MAKE CAMPUS BUILDINGS SAFER AND HEALTHIER

BY NEW PIG

When students enter an athletic building, dining hall, or laboratory, the humble floor mat is probably the last thing they notice. Facility managers, though, know these unassuming mats represent accident prevention, the capture of dirt and debris before it spreads throughout a building, and the protection of valuable flooring beneath. They are secret weapons in silent battles against slips, falls, and floor damage.

continued...





We talked with New Pig, a leading manufacturer of mats and a wide range of other products to manage leak and spill control, about the role mats can play on college campuses, strategic placement, and proper maintenance.

Why are carpet mats a crucial component of flooring safety in higher education facilities, and how do they contribute to accident prevention?

When Liberty Mutual Insurance created its 2024 Workplace Safety Index—listing the top 10 causes of the most serious workplace injuries—falls on the same level (cost per year: \$9.99B) came in at number two. slip and trip without a fall (cost per year: \$2.34B) came in at number seven. Carpeted mats go a long way toward preventing these serious accidents.

There are two contributing factors to safety with carpeted mats: (1) capture and contain moisture and debris and (2)

to ensure they are maintained properly to not contribute to slip, trip, and falls. Ultimately, accident prevention is more than selecting the appropriate matting solution, it is also defining an intentional program around placement, inspection, and maintenance.

What are the best placement strategies for entrance mats, and how can facility managers ensure they are effectively reducing dirt and moisture in high-traffic areas?

If you notice water or debris spreading beyond your entrance mats, it may be time to reassess whether your walk-off area is long enough. Look for high-risk zones where slips, trips, and falls are common, especially areas with poor traction or surface contaminants. Pay attention to moisture control, traffic patterns, and review safety logs regularly to identify problem spots and keep your facility cleaner.

How should facility managers evaluate the specific needs of different campus buildings when selecting carpet mats and flooring solutions?

There are new technologies around creating safe walkways depending on the challenge you are looking to address and the aesthetic goal. Balancing form and function can be important in campus buildings. Some areas may need mats that absorb moisture, while others require better traction. It's also important to think about how the mats will be cleaned and whether they meet performance standards for the building's specific needs.

What role do seasonal weather conditions play in the selection and placement of mats, and how can facilities adapt to ensure year-round safety?

It is important to think through seasonal



**FOR OVER
40 YEARS**
GROWSPAN HAS
BEEN HELPING
GROWERS

**ENERGY-EFFICIENT DESIGNS
EXPERT CONSULTATION
IN-HOUSE SERVICES
SUPERIOR ENVIRONMENTAL CONTROL**

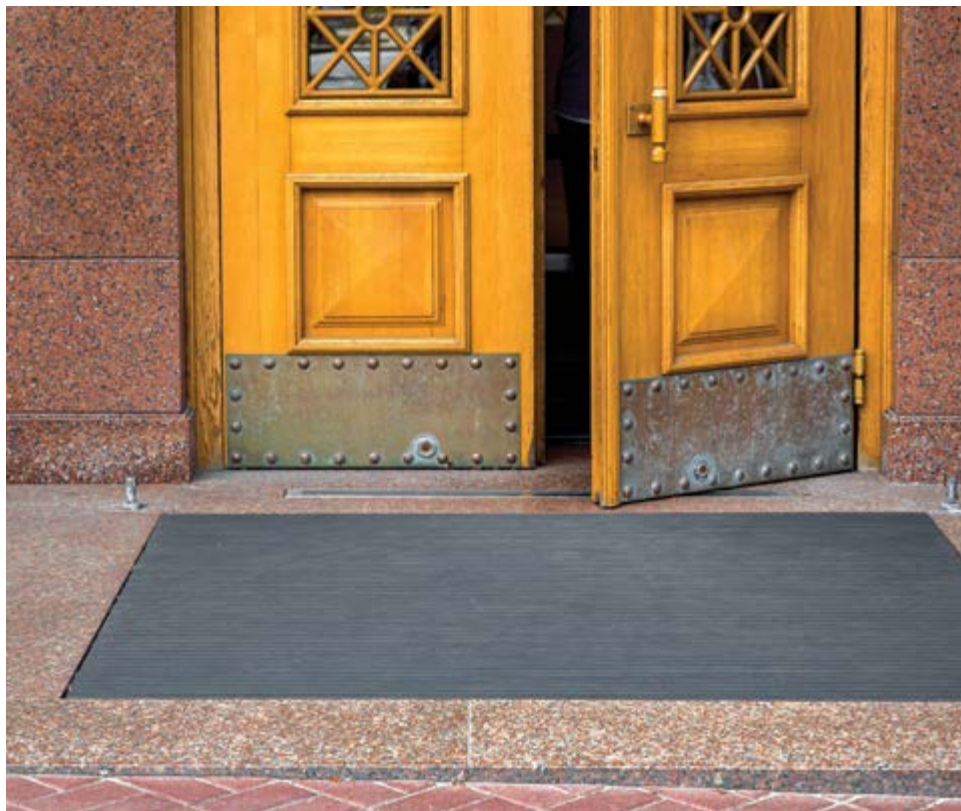
GROWspan
greenhouse structures
www.growspan.com
877.835.9996

requirements or inclement weather response to matting. Increasing walk off areas, performing more frequent inspections, and the use of blowers/dryers can help with handling additional environmental challenges. Use of tools like wet floor signs are also helpful to increase caution during challenging seasons or unexpected weather events.

How can carpet mats improve indoor air quality and reduce maintenance costs across a multi-building campus?

Carpet mats can trap a surprising amount of dirt, dust, and debris, helping prevent airborne particles and keeping contaminants from spreading through a facility. But to stay effective, mats must be cleaned or replaced regularly; otherwise, they can re-release allergens and particulates back into the air. According to ISSA, cleaning just one pound of dirt from a modern building can cost over \$600.

continued...



SUPERIOR
BUILDING SOLUTIONS
FOR OVER
40 YEARS

INDUSTRY-LEADING WARRANTIES
ENERGY-EFFICIENT DESIGNS
EXPERT CONSULTATION
METAL AND FABRIC BUILDINGS

ClearSpan
www.clearspan.com
1.866.643.1010



That's why stopping dirt at the door isn't just about safety—it's a smart way to cut maintenance costs and improve indoor air quality.

How often should facility managers inspect and replace mats to maintain safety and prevent liability issues?

Building a program around matting and floor safety is incredibly important. Regular visual inspections to ensure that matting is placed in your identified risk zones, appropriately sized for necessary walk off, and in good working order are extremely important. The key words are place, inspect, and maintain. Audit your walkways, engage your team, cover your entrances, map out your mats and select the right mats for each area. If you are renting mats and/or outsourcing your floor maintenance, it's time to get involved with your vendors. Ensure they are

ULINE

CLEANIN' UP!

**QUALITY JANITORIAL PRODUCTS
ALWAYS IN STOCK**

**ORDER BY 6 PM FOR
SAME DAY SHIPPING**



**IN STOCK –
SHIPS TODAY!**

COMPLETE CATALOG

1-800-295-5510

uline.com

placing mats according to your plan and train employees to inspect and reposition as needed.

What considerations should be made for specialized areas such as laboratories, dining halls, and athletic facilities when selecting flooring and matting?

Chemical compatibility, cleaning methods, wet or dry applications, foot and wheel traffic, and intended purpose are all important considerations. Laboratories could use items like anti-fatigue mats in areas of standing workstations; Sticky Shoe Cleaning Mats, ideal to prevent dirt and particle tracking; and signage mats that can be used for an absorbent solution plus identification in areas like eye wash stations, emergency showers, or for PPE reminders. Athletic facilities can use anything from rubber-backed matting, Grippy® Adhesive-Backed Mats, PIG® Anti-Slip Drainage Mat Roll, to traction

continued...



KEEP YOUR DORMS DRY

Include The WAGS Valve On Your Next Water Heater Replacement!



RED POP-UP INDICATOR TAB WHEN ACTIVATED



DO NOT ROTATE CAP REMOVAL OF THIS LID



100% MECHANICAL OPERATION

MADE IN THE USA

NO Electricity

NO Batteries

NO Wireless Signals

NO Maintenance

NO Worries



wags™

WATER HEATER SAFETY SHUTOFF

THE ONE SHOT WONDER

"A WATER HEATERS BEST FRIEND"

Available at SupplyHouse.com

WAGS Will Watch & Protect Property From Water Damage

1-844-GET-WAGS • WAGSVALVE.COM



AQUAGUARD

The Original Creators of the **wags™**

SINCE 2002

FOR 15% OFF - USE PROMO CODE

DRYDORMS

(ONLINE ORDERS ONLY)

(WAGS 4W VALVE INSTALLATION SHOWN)

solutions like PIG® HoofTrax™ Adhesive-Backed Runners. Cafeterias could use products like Grippy® Adhesive-Backed Mats or rubber-backed matting on student facing areas and have kitchen solutions like Pig Commercial Kitchen Rubber Drainage Mat or PIG® HoofTrax™ Adhesive-Backed Runners.

How can branding and aesthetics be incorporated into matting solutions without compromising safety and functionality?

There are several options for logo rugs as well as new technologies such as the PIG® Custom Printed & Logo Adhesive-Backed Grippy® Floor Mat which allow custom printing of images and designs while maintaining absorbency, cleanability, and both wet & dry COF (coefficient of friction) at affordable prices. If absorbency is not a factor, there are clear Non-Slip Adhesive-Backed Runner solutions

that are ASTM tested wet or dry to be “extremely low slip risk.” These offer minimal visual impact on the flooring.

What emerging technologies or innovations in flooring safety should facility managers be aware of when upgrading their campus infrastructure?

Many of the specific product options we just talked about represent innovations in flooring safety, which is exciting. In addition, there are floor treads and tapes as well as signs that can help keep floors safer, and floor cleaning and repair products to maintain floors while protecting employees and students from slip-and-fall hazards.



ABOUT THE AUTHOR: New Pig is the world's #1 trusted brand for leaks, drips, and spills—helping colleges and universities keep campuses safe, clean, and compliant with smart, reliable solutions. With expert support and products that work, we help facilities teams focus less on messes and more on what matters most: students and learning.

Ergonomic Intelligence

Learn about EI
and the real impact
of smart collegiate
furnishing solutions.



BIOFIT®

biofit.com 800-597-0246

© 2025 FBT Series of Fold & Roll Booths designed by Bruce Fifiield, manufactured by BioFit Engineered Products. FBT is a trademark of BioFit Engineered Products. FBT Series of Fold & Roll Booths are patent pending. All rights reserved.



They're away from home — but Cres Cor ovens can still deliver them home cooked foods!



OVENS LEFT TO RIGHT

Under Counter*: RO151XWUA5DX

Half Size*: RO151HWUA9DX

Stacked: RO151XWUA5DXSTKM2081

Full Size: RO151FWUA18DX

*Shown with optional stand and window.

(Roll-in racks and Pass-Through ovens also available.)

QuikTherm™ Cook-n-Hold Convection Ovens



Air Fry, Bake, Cook, Roast, Rethermalize and Hold with precise temperature and humidity control.

- Quicker temperature start-up and recovery times.
- Operate all fans on high for air frying crispy foods.
- Non-venting; does not require a hood. (Check with your local codes.)
- Power boosting switch allows end user flexibility to increase or reduce air flow.
- Models available with or without humidity. Full, half and under counter sizes available.
- Available in 208/240V, or 480V.