



Streamlining the Campus Transition

A CONVERSATION ON MOVE-IN AND MOVE-OUT SERVICES

BY UNIVERSITY AND STUDENT SERVICES

As private colleges and universities continue to refine the student experience from first impression to final farewell, one operational area has quietly emerged as a powerful differentiator: structured move-in and move-out services. Once viewed as a logistical necessity, these programs are now being reimagined as strategic tools that enhance student satisfaction, improve operational efficiency, and even support recruitment goals.

continued...



USS

UNIVERSITY AND STUDENT SERVICES

Fundraising Student Services

We offer a large menu of direct-to-student services, customized to fit your campus.

You get 10% of sales directly back!



MicroFridge Rental
Water Service
Summer Storage
Ship-To-Home

Laundry Service
Home-To-Room
Care Packages
Linens + Decor

More info at **UANDSS.COM/B2B**



In this feature, Private University Products and News spoke with the University and Student Services Company to explore how institutions can elevate these critical transition periods—and why doing so matters more than ever.

Creating a First Impression That Lasts

Few moments carry as much emotional weight as move-in day. It’s a milestone filled with excitement, anxiety, and, often, a car packed to its absolute limit.

“Structured move-in services immediately reduce stress for both students and their families,” the team explained. “When there’s a clear system in place—whether that’s scheduled arrival times, designated unloading zones, or trained staff assisting with belongings—it transforms what could be a chaotic experience into a welcoming one.”

Parents notice the difference. Students feel it. And that first impression often sets the tone for the entire campus experience.

Driving Satisfaction, Retention, and Success

While move-in may seem like a single-day event, its impact can ripple across the academic year.

Institutions that invest in organized move-in programs often see measurable gains in student satisfaction scores, particularly among first-year students. A smooth, supportive arrival experience helps students settle in faster, connect with peers sooner, and begin their academic journey with confidence.

“There’s a direct link between reducing early stress and improving a student’s sense of belonging,” the company noted. “And that sense of belonging plays a significant role in retention and first-year success.”

Managing the Logistics of High-Volume Days

Anyone who has witnessed campus move-in day knows the challenges: traffic congestion, long wait times, safety concerns, and overwhelmed staff.

Structured services address these issues head-on. Pre-assigned move-in windows stagger arrivals, reducing bottlenecks. Clearly marked traffic flow patterns improve safety for both pedestrians and drivers. And trained teams ensure that unloading happens quickly and efficiently.

“The goal is to create movement, not gridlock,” they emphasized. “With the right planning, what used to take hours can be reduced to minutes.”

Unlocking Operational Efficiency

For facilities and housing teams, move-in and move-out represent some of the most demanding days of the year. Without a coordinated approach, these periods can strain resources and staff capacity.

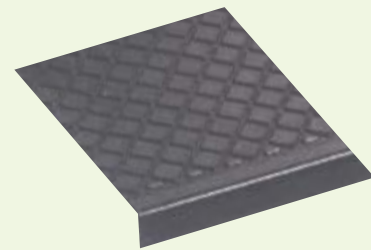
Organized programs streamline operations by clearly defining roles, timelines, and workflows. Whether it’s coordinating elevator usage, managing staging areas, or aligning housekeeping schedules, the result is a more predictable and manageable process.

continued...

A GREEN OUTDOOR STAIR TREAD



- Black color - green construction
- Made from 100% recycled tires
- Fibers embedded in rubber for long lasting, heavy duty wear
- Excellent traction in wet conditions



MUSSON RUBBER CO.

P.O. Box 7038 • Akron, Ohio 44306
 800-321-2381 • Fax 330-773-3254
 info@mussonrubber.com • www.mussonrubber.com

Custom Branding

At LaptopsAnytime™, we recognize that the success and excitement of your new kiosk is based on showcasing the best of your school's distinctive branding. Our seasoned pros will design and produce custom

graphics for you. The idea behind the graphics is to help promote the kiosk, and the laptop/charger initiative underlying it. Build enthusiasm for using the service at the same time as promoting your brand.



Self-Service Dispensing Kiosks

Repair Depot - Long/Short Term



OVER 6 MILLION ANNUAL CHECKOUTS AND GROWING **6,000,000**

Powered By  **LAPTOPSANYTIME™**
Automated Checkout Kiosks
1-877-836-3727 • LaptopsAnytime.com

“Efficiency isn’t just about speed—it’s about control,” the team shared. “When everyone knows their role, the entire operation runs smoother.”

Protecting Campus Assets

High traffic inevitably leads to wear and tear—but it doesn’t have to lead to damage.

Move-in services significantly reduce the risk to residence halls, elevators, and common areas by controlling how and when items are transported. Protective materials, monitored pathways, and supervised loading zones all contribute to preserving campus infrastructure.

“It’s far less costly to prevent damage than to repair it,” they noted. “A structured approach pays for itself in avoided maintenance.”

Choosing the Right Staffing Model

One of the most common questions institutions face is how to staff these programs effectively.

The answer often lies in a hybrid approach.

In-house teams provide oversight and institutional knowledge, while student workers add energy and relatability. Third-party vendors can bring scalability and specialized expertise, particularly for larger campuses.

“There’s no one-size-fits-all model,” they explained. “The most successful programs align staffing with campus size, culture, and budget.”

Balancing Cost and Opportunity

While move-in services require investment, they can also create revenue opportunities. Some institutions offer premium services—such as early move-in, room setup packages, or storage solutions—for an additional fee.

The key is balance.

“These programs should remain accessible while offering optional enhancements,” the team advised. “When done thoughtfully, they can offset costs without creating barriers for students.”

Supporting Accessibility and Inclusivity

Move-in and move-out services also play a critical role in supporting diverse student populations.

For students with disabilities, these programs can ensure necessary accommodations are in place from the moment they arrive. International students and families traveling long distances benefit from reduced logistical burdens and added support.

“This is about equity,” they emphasized. “Every student deserves a smooth and welcoming transition, regardless of their circumstances.”

Leveraging Technology for Smarter Operations

Technology is transforming how campuses manage move-in and move-out.

Scheduling platforms allow students to select arrival times, reducing congestion. Real-time communication tools keep families informed.

Building or renovating a gymnasium?



Call the design experts at IPI by Bison at 800-637-7968 for premium custom ceiling and wall mounted basketball backstops, divider curtains, wall padding and gym accessories.

IPI by Bison projects include quality Bison sports equipment!



Divider Curtains & Batting Cages



Ceiling & Floor Mounted Volleyball Systems



Wall Padding



Ceiling & Wall Mounted Backstops

Find us in **4specs.com**
MasterSpec
 Powered by Delta Specpoint™
speclinkie
 300 CAL details
ARCAT

REQUEST A QUOTE

FIBA
 APPROVED EQUIPMENT
 MADE IN AMERICA

NFHS
 PARTNER

Competition Basketball Portables

THE EXCLUSIVE NFHS PARTNER FOR BASKETBALL EQUIPMENT

Traffic management systems optimize flow and minimize delays.

“Data and communication are game changers,” they noted. “They allow institutions to anticipate challenges and respond in real time.”

A Powerful Branding Opportunity

Perhaps most importantly, move-in is no longer just an operational task—it’s a branding moment.

From the friendliness of staff to the efficiency of the process, every detail communicates something about the institution. A seamless, welcoming experience reinforces the message that the campus is organized, student-focused, and invested in success.

“Move-in day is often the first true campus experience,” they said. “It’s your opportunity to show—not just tell—what your institution stands for.”

Looking Beyond the Checklist

While many institutions focus on logistics, the most impactful programs go a step further.

Some campuses incorporate welcome stations, student ambassadors, and even small celebratory touches to create a sense of excitement. Others extend services into move-out, offering storage, shipping, or donation programs that reduce waste and support sustainability goals.

“These are the moments that elevate the experience,” the team added. “It’s not just about moving belongings—it’s about moving people into a community.”

Final Thoughts

As expectations continue to rise in higher education, even the most routine processes are being reexamined for their potential impact. Structured move-in and move-out services represent a unique opportunity to improve efficiency, protect facilities, and, most importantly, enhance the student experience.

For institutions willing to invest in thoughtful planning and execution, the payoff is clear: smoother operations, stronger first impressions, and a campus community that feels supported from day one.

And in today’s competitive landscape, that kind of start can make all the difference.

ABOUT THE AUTHOR: University and Student Services (USS) partners with over 100 universities to enhance campus living through custom programs, move-in solutions, and student-focused services—saving time, improving student success, and generating funds that directly support campus communities.

ULINE

THE KEY TO SAFE STORAGE

LOCKERS **SECURITY CARTS** **CLEAR-VIEW CABINETS** **FILE CABINETS**

ORDER BY 6 PM FOR SAME DAY SHIPPING **1-800-295-5510** uline.com